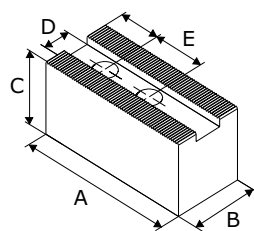


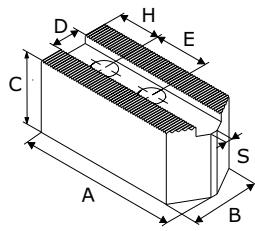
Mors doux Soft top jaws

Stries 60°
Serration 60°

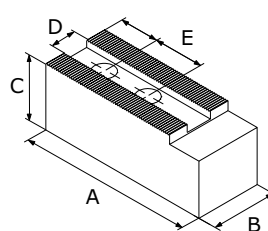
Acier
Steel



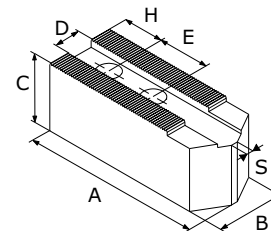
Version 1



Version 2



Version 4



Version 5

Type du mandrin Chuck type	Indeks Id.-No.	Type	A	B	C	D	E	Ecrus Screws	H	S	Version
Stries 1,5mm x 60° / Serration 1,5mm x 60°											
B-04; HOB-4	17 0000 3870	MTS-M 110-4	48	20	40	8	15	M6	8	4	2
AS04; AS110; B-204; B-205; HJ-4; N-04; NL04; NRC04	17 0000 7060	MTS-M 110-1	55	25	32	10	14	M8	13	4	2
	17 0000 4010	MTS-M 110-3	55	22	47	10	14	M8	13	4	2
B-05; HOB-5	17 0001 1700	MTS-M 135-1	57	25	32	10	18	M8	10	4	2
	17 0000 4020	MTS-M 135-2	55	22	47	10	18	M8	10	4	2
HJ-5; N-05	17 0001 1720	MTS-M 135-3	55	22	47	10	19	M8	10	4	2
AT04 ³⁾ ; BT204 ³⁾ ; BT205 ³⁾ ; NT04 ³⁾	17 0000 7240	2MKS-M 110-1	55	25	50	10	14	M8	13	-	1
NT05 ³⁾	17 0000 7250	2MKS-M 135-1	62	25	50	10	19	M8	10	-	1
AS06; AS165; B-06; B-07; B106; B160; B-206; BB06; BB206; BL206; BS306; DL06; DL206; DLN06; HJA5-6; HO-6; HOB-6; HOH-06K; HOH-106; HOH-160; HOH-206; HOS-6; ML06; N-06; N160; NL06; NRC06; QJR07	17 0000 7810	MKS-M 165-1	72	32	32	12	20	M10	15	-	1
	17 0001 1630	MKS-M 165-2	72	35	60	12	20	M10	15	-	1
	17 0000 0840	MTS-M 165-3	75	30	30	12	20	M10	15	13	2
	17 0000 0850	MTS-M 165-4	81	30	30	12	20	M10	15	13	2
	17 0000 7820	MTS-M 165-1	82	32	32	12	20	M10	15	4	5
17 0001 1760	MTS-M 165-2	82	35	60	12	20	M10	15	4	5	
AT06 ³⁾ ; BBT206 ³⁾ ; BLT206 ³⁾ ; BT06 ³⁾ ; BT206 ³⁾ ; HOBT-6 ³⁾ ; MLT06 ³⁾ ; NLT06 ³⁾ ; NT06 ³⁾	17 0000 7260	2MKS-M 165-1	72	35	60	12	20	M10	15	-	1
AS08; AS210; B-08; B108; B200; B-208; BB08; BB208; BL208; BS308; DL08; DL208; DLN08; HJA6-8; HO-8; HOB-8; HOH-08K; HOH-108; HOH-200; HOH-208; HOS-8; ML08; N-08; N200; NL08; NRC08; QJR08; UVE160K	17 0000 0860	MTS-M 210-4	95	35	35	14	25	M12	20	15	2
	17 0000 7830	MKS-M 210-1	95	35	40	14	25	M12	24	-	1
	17 0001 1640	MKS-M 210-2	95	35	60	14	25	M12	24	-	1
	17 0001 1650	MKS-M 210-3	95	40	80	14	25	M12	24	-	1
	17 0000 4750	MKS-M 210-4	95	40	100	14	25	M12	24	-	1
	17 0000 7840	MTS-M 210-1	102	35	40	14	25	M12	20	4	5
	17 0000 0880	MTS-M 210-5	102	35	40	14	25	M12	20	15	2
	17 0000 4760	MTS-M 210-2	102	40	80	14	25	M12	20	4	5
	17 0000 4770	MTS-M 210-3	102	40	100	14	25	M12	20	4	5
AT08 ³⁾ ; BBT208 ³⁾ ; BLT208 ³⁾ ; BT08 ³⁾ ; BT208 ³⁾ ; HOBT-8 ³⁾ ; MLT08 ³⁾ ; NLT08 ³⁾ ; NT08 ³⁾	17 0000 7270	2MKS-M 210-1	95	40	60	14	25	M12	24	-	1
AS10; AS250; B-10; B110; B-210; B250; BB10; BB210; BL210; BS310; HJA6-10; HJA8-10; HO-10; HOB-10; HOH-10K; HOH-110; HOH-210; HOH-250; HOS-10; N-10; N250; NL10; NRC10; QJR10; UVE200K; UVE250K	17 0000 7080	MKS-M 250-6	90	40	60	16	30	M12	15	-	1
	17 0000 7090	MKS-M 250-7	90	50	80	16	30	M12	15	-	1
	17 0000 0890	MTS-M 250-4	110	40	40	16	30	M12	20	17	2
	17 0000 7850	MKS-M 250-1	110	40	42	16	30	M12	30	-	1
	17 0000 7860	MKS-M 250-2	110	40	60	16	30	M12	30	-	1
	17 0000 1200	MTS-M 250-5	110	40	60	16	30	M12	20	17	2
	17 0001 1660	MKS-M 250-3	110	40	80	16	30	M12	30	-	1
	17 0001 1670	MKS-M 250-4	120	40	100	16	30	M12	30	-	1
	17 0000 1230	MKS-M 250-5	120	40	120	16	30	M12	30	-	1
	17 0000 7100	MKS-M 250-8	120	50	50	16	30	M12	30	-	1
	17 0001 1600	MTS-M 250-1	125	40	42	16	30	M12	30	4	5
	17 0001 1710	MTS-M 250-2	125	40	60	16	30	M12	30	4	5
	17 0000 7070	MTS-M 250-3	125	40	100	16	30	M12	30	4	5

**Mors doux
Soft top jaws**

 Stries 60°
Serration 60°

Type du mandrin Chuck type	Indeks Id.-No.	Type	A	B	C	D	E	Ecrous Screws	H	S	Version
AT10 ³⁾ ; BBT210 ³⁾ ; BLT210 ³⁾ ; BT10 ³⁾ ; BT210 ³⁾ ; HOBT-10 ³⁾ ; NLT10 ³⁾ ; NT10 ³⁾	17 0000 7280	2MKS-M 250-1	110	40	80	16	30	M12	30	-	1
B-12; B300; DL10; DL12; DL210; DL212; HJA6-12; HJA8-12; HLA6-12; HLA6-15; HLA8-15; HO-12; HOB-12; HOH-12K; HOH-300; HOS-12; N-12; N300; NL12; UVE315K	17 0000 7110	MKS-M 300-1	130	50	50	18	30	M14	40	-	1
	17 0000 7120	MKS-M 300-2	130	50	80	18	30	M14	40	-	1
	17 0000 7130	MKS-M 300-3	130	50	120	18	30	M14	40	-	1
	17 0000 7140	MTS-M 300-3	145	50	50	18	30	M14	30	10	5
	17 0000 7150	MTS-M 300-4	145	50	100	18	30	M14	30	10	5
BT12 ³⁾ ; HOBT-12 ³⁾ ; NLT12 ³⁾ ; NT12 ³⁾	17 0000 7290	2MKS-M 300-1	130	50	50	18	30	M14	40	-	1
B112; B-212; BB212; BL212; HOH-112; HOH-212; QJR12	17 0001 1610	MKS-M 300-4	129	50	60	21	30	M16	39	-	1
	17 0001 1680	MKS-M 300-5	129	50	80	21	30	M16	39	-	1
	17 0000 1250	MKS-M 300-6	129	50	100	21	30	M16	25	-	1
	17 0000 1260	MKS-M 300-7	129	50	120	21	30	M16	25	-	1
	17 0000 7160	MKS-M 300-9	140	50	100	21	30	M16	30	-	1
	17 0001 1620	MTS-M 300-5	145	50	50	21	30	M16	30	10	5
17 0000 7170	MTS-M 300-6	145	50	100	21	30	M16	30	10	5	
BBT212 ³⁾ ; BLT212 ³⁾ ; BT212 ³⁾	17 0000 7300	2MKS-M 300-2	110	50	60	21	30	M16	21	-	1
B-15; B-18; B380; B450; HJA8-15 ⁷⁾ ; HJA8-18 ⁷⁾ ; HJA8-21 ⁷⁾ ; HJA11-15 ⁷⁾ ; HLA8-18 ⁷⁾ ; HLA8-21 ⁷⁾ ; HO-15; HOB-15; HOB-18; HOH-15K; HOS-15; UPR450	17 0000 3060	MKS-M 380-1	165	60	60	22	43	M20	37	-	1
	17 0000 4100	MKS-M 380-2	165	60	80	22	43	M20	37	-	1
	17 0000 4120	MKS-M 380-3	165	60	120	22	43	M20	37	-	1
	17 0000 7180	MTS-M 380-1	185	60	60	22	43	M20	30	10	5
BT15 ³⁾ ; HOBT-15 ³⁾	17 0000 8840	2MKS-M 380-1	165	60	60	22	43	M20	37	-	1
B-215; BB218; BB221; N-15; N-18; NL18; NV15; NV18	17 0000 3050	MKS-M 380-5	135	60	60	25,5	43	M20	26	-	1
	17 0000 4070	MKS-M 380-6	135	60	80	25,5	43	M20	26	-	1
	17 0000 4090	MKS-M 380-7	135	60	120	25,5	43	M20	26	-	1
	17 0000 3070	MKS-M 380-8	165	60	60	25,5	43	M20	37	-	1
	17 0000 4140	MKS-M 380-9	165	60	80	25,5	43	M20	37	-	1
	17 0000 4160	MKS-M 380-10	165	60	120	25,5	43	M20	37	-	1
Stries 3,0mm x 60° / Serration 3,0mm x 60°											
HJ-15; HJ380; UVE400K	17 0000 7200	MKS-M 380-4	156	60	80	22	60	M20	36	-	1
B-21; B-24; HJ-18; HJ-21; HJ-24 ⁷⁾ ; HJA11-18; HJA11-21; HJA11-24 ⁷⁾ ; HJA15-24 ⁷⁾ ; HO-18; HOB-21; HOB-24; N-21; N-24; NV21; NV24; NV28; NV32; NV36; NV40; UVE500AR; UVE550AR; UVE630AR; UVE750AR ⁷⁾ ; UVE500K; UVE630K; UVE800K ⁷⁾ ; UVE500L; UVE630L; UVE500LB; UVE630LB; UVE800LB ⁷⁾	17 0000 7210	MKS-M 530-2	180	75	115	25	60	M20	50	-	1
	17 0000 7220	MKS-M 530-3	180	75	155	25	60	M20	50	-	1
	17 0000 7190	MKS-M 530-4	195	80	80	25	60	M20	50	-	1
	17 0000 3910	MKS-M 530-5	200	70	70	25	60	M20	40	-	1
	17 0000 3920	MKS-M 530-6	250	70	70	25	60	M20	40	-	4

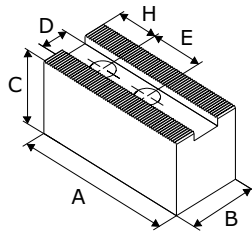
³⁾ 2-jaw chuck

⁷⁾ Please check the connecting dimensions

Mors doux
Soft top jaws

Stries 60°
Serration 60°

Aluminium
Aluminum



Version 1

Type du mandrin Chuck type	Indeks Id.-No.	Type	A	B	C	D	E	Ecrous Screws	H	S	Version
Stries 1,5mm x 60° / Serration 1,5mm x 60°											
AS06; AS165; B-06; B-07; B106; B160; B-206; BB06; BB206; BL206; BS306; DL06; DL206; DLN06; HJA5-6; HO-6; HOB-6; HOH-06K; HOH-106; HOH-160; HOH-206; HOS-6; ML06; N-06; N160; NL06; NRC06; QJR07	17 0000 7310	MKA-M 165-1	72	35	50	12	20	M10	15	-	1
AS08; AS210; B-08; B108; B200; B-208; BB08; BB208; BL208; BS308; DL08; DL208; DLN08; HJA6-8; HO-8; HOB-8; HOH-08K; HOH-108; HOH-200; HOH-208; HOS-8; ML08; N-08; N200; NL08; NRC08; QJR08; UVE160K	17 0000 7320	MKA-M 210-1	90	40	60	14	25	M12	20	-	1
AS10; AS250; B-10; B110; B-210; B250; BB10; BB210; BL210; BS310; HJA6-10; HJA8-10; HO-10; HOB-10; HOH-10K; HOH-110; HOH-250; HOS-10; N-10; N250; NL10; NRC10; QJR10; UVE200K; UVE250K	17 0000 7330	MKA-M 250-1	110	40	60	16	30	M12	25	-	1
B-12; B300; DL10; DL12; DL210; DL212; HJA6-12; HJA8-12; HLA6-12; HLA6-15; HLA8-15; HO-12; HOB-12; HOH-12K; HOH-300; HOS-12; N-12; N300; NL12; UVE315K	17 0000 7340	MKA-M 300-1	130	50	80	18	30	M14	40	-	1
B112; B-212; BB212; BL212; HOH-112; HOH-212; QJR12	17 0000 7350	MKA-M 300-2	130	50	80	21	30	M16	40	-	1
B-15; B-18; B-215 ⁶⁾ ; B380; B450; BB218 ⁶⁾ ; BB221 ⁶⁾ ; HJA8-15 ⁷⁾ ; HJA8-18 ⁷⁾ ; HJA8-21 ⁷⁾ ; HJA11-15 ⁷⁾ ; HLA8-18 ⁷⁾ ; HLA8-21 ⁷⁾ ; HO-15; HOB-15; HOB-18; HOH-15K; HOS-15; N-15 ⁶⁾ ; N-18 ⁶⁾ ; NL18 ⁶⁾ ; NV15 ⁶⁾ ; NV18 ⁶⁾ ; UPR450	17 0000 7360	MKA-M 380-2	145	60	80	22	43	M20	40	-	1

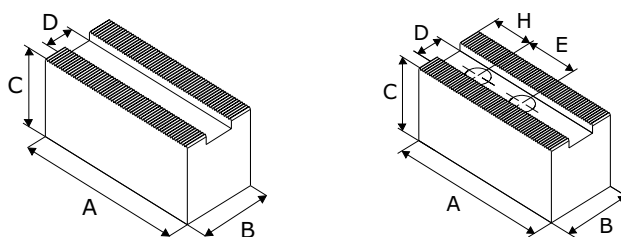
⁶⁾ Please check the slot width.

If necessary please use stepped T-nuts

⁷⁾ Please check the connecting dimensions

Stries 60°
 Serration 60°

Acier
 Steel



Type du mandrin Chuck type	Sans trous Without bolt holes		Avec trous With bolt holes		A	B	C	D
	Indeks Id.-No.	Type	Indeks Id.-No.	Type				
Stries 1,5mm x 60° / Serration 1,5mm x 60°								
AS04; AS110; AT04 ³⁾ ; B-05; B-204; B-205; BT204 ³⁾ ; BT205 ³⁾ ; HJ-4; HJ-5; HOB-5; N-04; N-05; NL04; NRC04; NT04 ³⁾ ; NT05 ³⁾	17 0000 6540	MBS-M 110-1	17 0000 6541	MWS-M 110-1	55	25	50	10
AS06; AS165; AT06 ³⁾ ; B-06; B-07; B-206; B106; B160; BB06; BB206; BBT206 ³⁾ ; BL206; BLT206 ³⁾ ; BT06 ³⁾ ; BS306; BT206 ³⁾ ; DL06; DL206; DLN06; HJA5-6; HO-6; HOB-6; HOBT-6 ³⁾ ; HOH-06K; HOH-106; HOH-160; HOH-206; HOS-6; HW-08 ⁸⁾ ; ML06; MLT06 ³⁾ ; N-06; N160; NL06; NLT06 ³⁾ ; NRC06; NT06 ³⁾ ; QJR07	17 0000 6550	MBS-M 165-1	17 0000 6551	MWS-M 165-1	81	30	60	12
AS08; AS210; AT08 ³⁾ ; B-08; B108; B200; B-208; BB08; BB208; BBT208 ³⁾ ; BL208; BLT208 ³⁾ ; BS308; BT08 ³⁾ ; BT208 ³⁾ ; DL08; DL208; DLN08; HJA6-8; HO-8; HOB-8; HOBT-8 ³⁾ ; HOH-08K; HOH-108; HOH-200; HOH-208; HOS-8; MLO8; MLT08 ³⁾ ; N-08; N200; NL08; NLT08 ³⁾ ; NRC08; NT08 ³⁾ ; QJR08; UVE160K	17 0000 5000	MBS-M 210-1	17 0000 5001	MWS-M 210-1	95	35	35	14
	17 0000 5010	MBS-M 210-2	17 0000 5011	MWS-M 210-2	95	40	60	14
	17 0000 5020	MBS-M 210-3	17 0000 5021	MWS-M 210-3	95	40	80	14
	17 0000 5030	MBS-M 210-4	17 0000 5031	MWS-M 210-4	95	40	100	14
	17 0000 5040	MBS-M 210-5	17 0000 5041	MWS-M 210-5	102	40	80	14
	17 0000 5050	MBS-M 210-6	17 0000 5051	MWS-M 210-6	102	40	100	14
AS10; AS250; AT10 ³⁾ ; B-10; B110; B-210; B250; BB10; BB210; BBT210 ³⁾ ; BL210; BLT210 ³⁾ ; BS310; BT10 ³⁾ ; BT210 ³⁾ ; HJA6-10; HJA8-10; HO-10; HOB-10; HOBT-10 ³⁾ ; HOH-10K; HOH-110; HOH-250; HOS-10; HW-10 ⁸⁾ ; HW-12 ⁸⁾ ; N-10; N250; NL10; NLT10 ³⁾ ; NRC10; NT10 ³⁾ ; QJR10; UVE200K; UVE250K	17 0000 5060	MBS-M 250-1	17 0000 5061	MWS-M 250-1	110	40	40	16
	17 0000 5070	MBS-M 250-2	17 0000 5071	MWS-M 250-2	110	40	60	16
	17 0000 5080	MBS-M 250-3	17 0000 5081	MWS-M 250-3	110	40	80	16
	17 0000 5090	MBS-M 250-4	17 0000 5091	MWS-M 250-4	110	40	100	16
	17 0000 5100	MBS-M 250-5	17 0000 5101	MWS-M 250-5	129	40	60	16
B112; B-212; BB212; BBT212 ³⁾ ; BL212; BLT212 ³⁾ ; BT212 ³⁾ ; HOH-112; HOH-212; QJR12	17 0000 5110	MBS-M 300-1	17 0000 5111	MWS-M 300-1	129	50	80	21
	17 0000 5120	MBS-M 300-2	17 0000 5121	MWS-M 300-2	129	50	100	21
	17 0000 5130	MBS-M 300-3	17 0000 5131	MWS-M 300-3	129	50	120	21

³⁾ 2-jaw chuck

⁸⁾ 4-jaw chuck

For jaws with bolt holes please indicate H and E dimensions

**Slot width 10 mm,
bored for M8**

Minimum values:
H = 8 mm, E = 14 mm

**Slot width 12 mm,
bored for M10**

Minimum values:
H = 12 mm, E = 16 mm

**Slot width 14 mm,
bored for M12**

Minimum values:
H = 12 mm, E = 19 mm

**Slot width 16 mm,
bored for M12**

Minimum values:
H = 12 mm, E = 19 mm

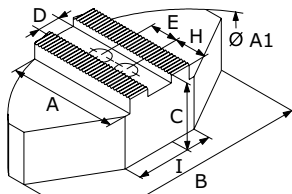
**Slot width 21 mm,
bored for M16**

Minimum values:
H = 15 mm, E = 25 mm

Mors doux enveloppants
Soft full grip jaws

Stries 60°
Serration 60°

Acier
Steel

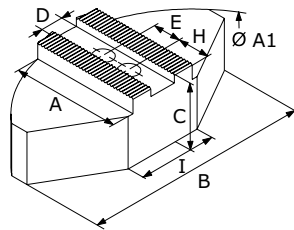


Version 1

Type du mandrin Chuck type	Indeks Id.-No.	Type	A	B	C	D	E	Ecrous Screws	H	I	A1	Version
Stries 1,5mm x 60° / Serration 1,5mm x 60°												
AS06; AS165; B-06; B-07; B106; B160; B-206; BB06; BB206; BL206; BS306; DL06; DL206; DLN06; HJA5-6; HO-6; HOB-6; HOH-06K; HOH-106; HOH-160; HOH-206; HOS-6; ML06; N-06; N160; NL06; NRC06; QJR07	17 0000 1380	GPS-M 165-1	60	120	50	12	20	M10	25	50	160	1
AS08; AS210; B-08; B108; B200; B-208; BB08; BB208; BL208; BS308; DL08; DL208; DLN08; HJA6-8; HO-8; HOB-8; HOH-08K; HOH-108; HOH-200; HOH-208; HOS-8; ML08; N-08; N200; NL08; NRC08; QJR08; UVE160K	17 0000 1390	GPS-M 210-1	70	140	60	14	25	M12	30	70	200	1
	17 0000 6610	GPS-M 210-2	70	140	80	14	25	M12	30	70	200	1
AS10; AS250; B-10; B110; B-210; B250; BB10; BB210; BL210; BS310; HJA6-10; HJA8-10; HO-10; HOB-10; HOH-10K; HOH-110; HOH-250; HOS-10; N-10; N250; NL10; NRC10; QJR10; UVE200K; UVE250K	17 0000 1400	GPS-M 250-1	80	180	60	16	30	M12	30	100	250	1
	17 0000 6620	GPS-M 250-2	80	180	80	16	30	M12	30	100	250	1
B-12; B300; DL10; DL12; DL210; DL212; HJA6-12; HJA8-12; HLA6-12; HLA6-15; HLA8-15; HO-12; HOB-12; HOH-12K; HOH-300; HOS-12; N-12; N300; NL12; UVE315K	17 0000 4220	GPS-M 300-1	110	240	70	18	30	M14	40	120	300	1
B112; B-212; BB212; BL212; HOH-112; HOH-212; QJR12	17 0000 1410	GPS-M 300-2	110	240	70	21	30	M16	45	120	300	1

Mors doux enveloppants
Soft full grip jaws

 Stries 60°
 Serration 60°

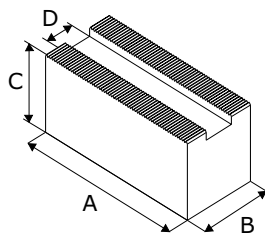
 Aluminium
 Aluminum


Version 1

Typ uchwytu Chuck type	Indeks Id.-No.	Typ Type	A	B	C	D	E	Śruby Screws	H	I	A1	Wersja Version
Stries 1,5mm x 60° / Serration 1,5mm x 60°												
AS06; AS165; B-06; B-07; B106; B160; B-206; BB06; BB206; BL206; BS306; DL06; DL206; DLN06; HJA5-6; HO-6; HOB-6; HOH-06K; HOH-106; HOH-160; HOH-206; HOS-6; ML06; N-06; N160; NL06; NRC06; QJR07	17 0000 6370	GPA-M 165-1	59,5	120	58	12	20	M10	25	40	165	1
AS08; AS210; B-08; B108; B200; B-208; BB08; BB208; BL208; BS308; DL08; DL208; DLN08; HJA6-8; HO-8; HOB-8; HOH-08K; HOH-108; HOH-200; HOH-208; HOS-8; ML08; N-08; N200; NL08; NRC08; QJR08; UVE160K	17 0000 6380	GPA-M 210-1	72,5	140	58	14	25	M12	35	50	200	1
	17 0000 6390	GPA-M 210-2	72,5	140	80	14	25	M12	35	50	200	1
AS10; AS250; B-10; B110; B-210; B250; BB10; BB210; BL210; BS310; HJA6-10; HJA8-10; HO-10; HOB-10; HOH-10K; HOH-110; HOH-250; HOS-10; N-10; N250; NL10; NRC10; QJR10; UVE200K; UVE250K	17 0000 6400	GPA-M 250-1	87,5	180	58	16	30	M12	40	70	250	1
	17 0000 6410	GPA-M 250-2	87,5	180	80	16	30	M12	40	70	250	1
B-12; B300; DL10; DL12; DL210; DL212; HJA6-12; HJA8-12; HLA6-12; HLA6-15; HLA8-15; HO-12; HOB-12; HOH-12K; HOH-300; HOS-12; N-12; N300; NL12; UVE315K	17 0000 6420	GPA-M 300-1	117	240	78	18	30	M14	40	80	320	1
B112; B-212; BB212; BL212; HOH-112; HOH-212; QJR12	17 0000 6430	GPA-M 300-2	117	240	78	21	30	M16	45	80	320	1

Barres striées Serrated Bars

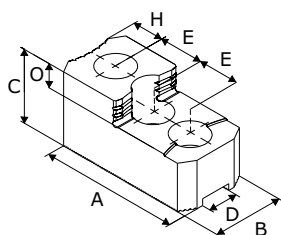
Acier
Steel



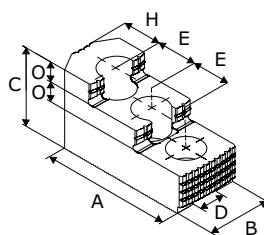
Fabricant Manufacturer	Indeks Id.-No.	Typ Type	A	B	C	D
Stries 1/16" x 90° / Serration 1/16" x 90°						
Autoblok-SMW; Berg; Bison; Forkardt; Röhm; Schunk	17 0000 6110	LKS-C 12-1	420	35	60	12
	17 0000 6120	LKS-C 14-1	420	35	60	14
	17 0000 6130	LKS-C 17-1	420	40	60	17
	17 0000 6140	LKS-C 17-2	420	40	100	17
	17 0000 6150	LKS-C 21-1	420	50	60	21
	17 0000 5940	LKS-C 21-2	420	50	80	21
	17 0000 6160	LKS-C 21-3	420	50	120	21
Stries 1,5mm x 60° / Serration 1,5mm x 60°						
Autoblok-SMW; Autogrip; Bison; Howa; Kitagawa; MMK-Matsumoto; Röhm; Samchully; Schunk; Seoam; Strong; Tonfou	17 0000 6170	LKS-M 12-1	420	35	60	12
	17 0000 6179	LKS-M 14-1	420	35	60	14
	17 0000 6180	LKS-M 14-2	420	40	80	14
	17 0000 6190	LKS-M 14-3	420	60	60	14
	17 0000 5829	LKS-M 16-1	420	40	60	16
	17 0000 5930	LKS-M 16-2	420	40	80	16
	17 0000 6200	LKS-M 16-3	420	60	60	16
	17 0000 5931	LKS-M 16-4	420	40	100	16
	17 0000 6209	LKS-M 21-1	420	50	60	21
	17 0000 6210	LKS-M 21-2	420	50	80	21
	17 0000 6211	LKS-M 21-3	420	50	100	21
	17 0000 6220	LKS-M 21-4	420	60	120	21
	17 0000 6247	LKS-M 25,5-1	420	60	80	25,5
	17 0000 6255	LKS-M 25,5-2	420	60	120	25,5
Stries 3,0mm x 60° / Serration 3,0mm x 60°						
Autoblok-SMW; Autogrip; Bison; Howa; Kitagawa; MMK-Matsumoto; Röhm; Samchully; Schunk; Seoam; Strong; Tonfou	17 0000 6243	LKS-M 25-1	420	60	80	25
	17 0000 6245	LKS-M 25-2	420	60	120	25

Mors durs réversibles
Hard stepped top jaws

Stries 60°
Serration 60°



Version 1



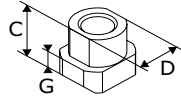
Version 2

Type du mandrin Chuck type	Indeks Id.-No.	Type	A	B	C	D	E	Ecrous Screws	H	O	Version
Stries 1,5mm x 60° / Serration 1,5mm x 60°											
AS04; AS110; B-204; B-205; HJ-4; N-04; NL04; NRC04	17 0000 4260	SGT-M 110-1	53	23	28	10	14	M8	14	10	1
AT04 ³⁾ ; BT204 ³⁾ ; BT205 ³⁾ ; NT04 ³⁾	17 0001 1290	2SGT-M 110-1	53	23	28	10	14	M8	14	10	1
AS06; AS165; B-06; B-07; B106; B160; B-206; BB06; BB206; BL206; BS306; DL06; DL206; DLN06; HJA5-6; HO-6; HOB-6; HOH-06K; HOH-106; HOH-160; HOH-206; HOS-6; ML06; N-06; N160; NL06; NRC06; QJR07	17 0000 1540	SGT-M 165-1	67	31	36	12	20	M10	14	12	1
AT06 ³⁾ ; BBT206 ³⁾ ; BLT206 ³⁾ ; BT06 ³⁾ ; BT206 ³⁾ ; HOBT-6 ³⁾ ; MLT06 ³⁾ ; NLT06 ³⁾ ; NT06 ³⁾	17 0001 1300	2SGT-M 165-1	67	31	36	12	20	M10	14	12	1
AS08; AS210; B-08; B108; B200; B-208; BB08; BB208; BL208; BS308; DL08; DL208; DLN08; HJA6-8; HO-8; HOB-8; HOH-08K; HOH-108; HOH-200; HOH-208; HOS-8; ML08; N-08; N200; NL08; NRC08; QJR08; UVE160K	17 0000 7510	SGT-M 210-1	79	32	38	14	25	M12	16	12	1
	17 0000 1550	SGT-M 210-2	87	35	51	14	25	M12	20,5	12	2
AT08 ³⁾ ; BBT208 ³⁾ ; BLT208 ³⁾ ; BT08 ³⁾ ; BT208 ³⁾ ; HOBT-8 ³⁾ ; MLT08 ³⁾ ; NLT08 ³⁾ ; NT08 ³⁾	17 0001 1310	2SGT-M 210-1	87	35	51	14	25	M12	20,5	12	2
AS10; AS250; B-10; B110; B-210; B250; BB10; BB210; BL210; BS310; HJA6-10; HJA8-10; HO-10; HOB-10; HOH-10K; HOH-110; HOH-250; HOS-10; N-10; N250; NL10; NRC10; QJR10; UVE200K; UVE250K	17 0000 1560	SGT-M 250-1	101	40	54	16	30	M12	23	13	2
AT10 ³⁾ ; BBT210 ³⁾ ; BLT210 ³⁾ ; BT10 ³⁾ ; BT210 ³⁾ ; HOBT-10 ³⁾ ; NLT10 ³⁾ ; NT10 ³⁾	17 0001 1330	2SGT-M 250-1	101	40	54	16	30	M12	23	13	2
B-12; B300; DL10; DL12; DL210; DL212; HJA6-12; HJA8-12; HLA6-12; HLA6-15; HLA8-15; HO-12; HOB-12; HOH-12K; HOH-300; HOS-12; N-12; N300; NL12; UVE315K	17 0000 4280	SGT-M 300-1	103	50	52	18	30	M14	22,5	17	1
	17 0000 7520	SGT-M 300-2	106	50	62	18	30	M14	20	15	2
BT12 ³⁾ ; HOBT-12 ³⁾ ; NLT12 ³⁾ ; NT12 ³⁾	17 0001 1350	2SGT-M 300-1	103	50	52	18	30	M14	22,5	17	1
B112; B-212; BB212; BL212; HOH-112; HOH-212; QJR12	17 0000 1570	SGT-M 300-3	103	50	52	21	30	M16	22,5	17	1
	17 0000 7530	SGT-M 300-4	128	50	62	21	30	M16	46	14	2
BBT212 ³⁾ ; BLT212 ³⁾ ; BT212 ³⁾	17 0001 1370	2SGT-M 300-2	103	50	52	21	30	M16	22,5	17	1
B-15; B-18; B380; B450; HJA8-15 ⁷⁾ ; HJA8-18 ⁷⁾ ; HJA8-21 ⁷⁾ ; HJA11-15 ⁷⁾ ; HLA8-18 ⁷⁾ ; HLA8-21 ⁷⁾ ; HO-15; HOB-15; HOB-18; HOH-15K; HOS-15; UPR450	17 0000 3170	SGT-M 380-1	149	62	86	22	43	M20	30,5	20	2
B-215; BB218; BB221; N-15; N-18; NL18; NV15; NV18	17 0000 3160	SGT-M 380-2	149	62	86	25,5	43	M20	30,5	20	2
Stries 3,0mm x 60° / Serration 3,0mm x 60°											
B-21; B-24; HJ-18; HJ-21; HJ-24 ⁷⁾ ; HJA11-18; HJA11-21; HJA11-24 ⁷⁾ ; HJA15-24 ⁷⁾ ; HO-18; HOB-21; HOB-24; N-21; N-24; NV21; NV24; NV28; NV32; NV36; NV40; UVE500AR; UVE550AR; UVE630AR; UVE750AR ⁷⁾ ; UVE500K; UVE630K; UVE800K ⁷⁾ ; UVE500L; UVE630L; UVE500LB; UVE630LB; UVE800LB ⁷⁾	17 0000 4300	SGT-M 530-1	159,5	80	90	25	50	M20	33	40	1

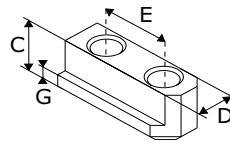
³⁾ 2-jaw chuck

⁷⁾ Please check the connecting dimensions

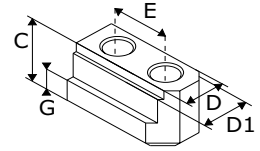
KITAGAWA
Lardons
T-Nuts



Version 1



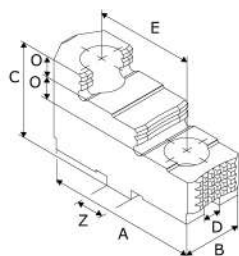
Version 4



Version 6

Type du mandrin Chuck type	Indeks Id.-No.	Type	C	D		E	Ecrous Screws	G	DIAMETRE DU MANDRIN	Version
					-					
B-206 B-106 BB-206 HOH-206	17 0000 3230	WTD 12-3	18,5	12	-		M10x25	7,5	165MM	4
B-208 B-108 BB208	17 0000 3240	WTD 14-3	20,5	14	-	25	M12x30	8,5	210MM	4
B-210; BB210; BT210; HOH-210	17 0000 3250	WTD 16-2	21,5	16	-	30	M12x30	8,5	254MM	4
B-212; HOH-212	17 0000 3260	WTD 21-3	28	21	-	30	M16x40	11,5	304MM	4
BB212; BBT212	17 0000 5880	WTD 21-4	23	21	-	30	M16x35	11,5	304MM	4
B-215;	17 0000 3270	WTD 25,5-2	39,5	25,5	-	43	M20x50	19	381MM	4
					-					

Mors durs ISO pour mandrin manuel Hard top jaws for self-centering scroll chucks



Type mandrin		Indeks Id.-No.	Typ Type	A	B	C	D	E	Vis Screws	O	Z
<i>Tenon / Tongue and groove connection</i>											
32**-125; 35**-125	3 mors	17 0000 5860	SGT-RB 125	56	22	38,5	7,94	32	M8	8	12,69
36**-125 ⁸⁾ ; 37**-125 ⁸⁾	4 mors	17 0000 9670	4SGT-RB 125	56	22	38,5	7,94	32	M8	8	12,69
38**-125 ¹⁰⁾	6 mors	17 0000 9680	6SGT-RB 125	56	22	38,5	7,94	32	M6	8	12,69
32**-160; 35**-160	3 mors	17 0000 3490	SGT-RB 160	67	25	41,5	7,94	38,1	M10	8,5	12,69
36**-160 ⁸⁾ ; 37**-160 ⁸⁾	4 mors	17 0000 9690	4SGT-RB 160	67	25	41,5	7,94	38,1	M10	8,5	12,69
38**-160 ¹⁰⁾	6 mors	17 0000 9700	6SGT-RB 160	67	25	41,5	7,94	38,1	M8	8,5	12,69
32**-200; 35**-200	3 mors	17 0000 3500	SGT-RB 200	80	27	43,5	7,94	44,5	M10	9,5	12,69
36**-200 ⁸⁾ ; 37**-200 ⁸⁾	4 mors	17 0000 9710	4SGT-RB 200	80	27	43,5	7,94	44,5	M10	9,5	12,69
38**-200 ¹⁰⁾	6 mors	17 0000 9720	6SGT-RB 200	80	27	43,5	7,94	44,5	M8	9,5	12,69
32**-250; 35**-250	3 mors	17 0000 3510	SGT-RB 250	95	32,5	51,5	12,7	54	M12	12	19,04
36**-250 ⁸⁾ ; 37**-250 ⁸⁾	4 mors	17 0000 9730	4SGT-RB 250	95	32,5	51,5	12,7	54	M12	12	19,04
38**-250 ¹⁰⁾	6 mors	17 0000 9740	6SGT-RB 250	95	32,5	51,5	12,7	54	M12	12	19,04
32**-315; 35**-315	3 mors	17 0000 3520	SGT-RB 315	110	37	55	12,7	63,5	M12	13	19,04
36**-315 ⁸⁾ ; 37**-315 ⁸⁾	4 mors	17 0000 9750	4SGT-RB 315	110	37	55	12,7	63,5	M12	13	19,04
38**-315 ¹⁰⁾	6 mors	17 0000 9760	6SGT-RB 315	110	37	55	12,7	63,5	M12	13	19,04
32**-400; 35**-400	3 mors	17 0000 3530	SGT-RB 400	127	42	64,5	12,7	76,2	M16	13,5	19,04
36**-400 ⁸⁾ ; 37**-400 ⁸⁾	4 mors	17 0000 9770	4SGT-RB 400	127	42	64,5	12,7	76,2	M16	13,5	19,04
38**-400 ¹⁰⁾	6 mors	17 0000 9780	6SGT-RB 400	127	42	64,5	12,7	76,2	M16	13,5	19,04
32**-500; 35**-500	3 mors	17 0000 3540	SGT-RB 500	127	42	74,5	12,7	76,2	M20	17	19,04
36**-500 ⁸⁾ ; 37**-500 ⁸⁾	4 mors	17 0000 9790	4SGT-RB 500	127	42	74,5	12,7	76,2	M20	17	19,04
38**-500 ¹⁰⁾	6 mors	17 0000 9800	6SGT-RB 500	127	42	74,5	12,7	76,2	M20	17	19,04
32**-630; 35**-630	3 mors	17 0000 3550	SGT-RB 630	127	52	82	12,7	76,2	M20	21	19,04
36**-630 ⁸⁾ ; 37**-630 ⁸⁾	4 mors	17 0000 9810	4SGT-RB 630	127	52	82	12,7	76,2	M20	21	19,04
38**-630 ¹⁰⁾	6 mors	17 0000 9820	6SGT-RB 630	127	52	82	12,7	76,2	M20	21	19,04
32**-800; 35**-800	3 mors	17 0000 3550	SGT-RB 630	127	52	82	12,7	76,2	M20	21	19,04
36**-800 ⁸⁾ ; 37**-800 ⁸⁾	4 mors	17 0000 9830	4SGT-RB 800	127	52	82	12,7	76,2	M20	21	19,04
38**-800 ¹⁰⁾	6 mors	17 0000 9840	6SGT-RB 800	127	52	82	12,7	76,2	M20	21	19,04
32**-1000; 35**-1000	3 mors	17 0000 9850	SGT-RB 1000	175	75	97	12,7	76,2	M22	28	19,04
36**-1000 ⁸⁾ ; 37**-1000 ⁸⁾	4 mors	17 0000 9860	4SGT-RB 1000	175	75	97	12,7	76,2	M22	28	19,04
38**-1000 ¹⁰⁾	6 mors	17 0000 9870	6SGT-RB 1000	175	75	97	12,7	76,2	M22	28	19,04

⁸⁾ Mandrin 4-mors

¹⁰⁾ Mandrin 6-mors

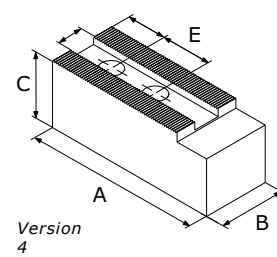
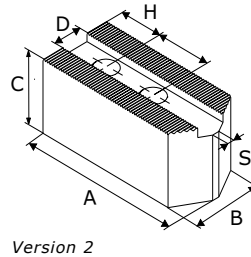
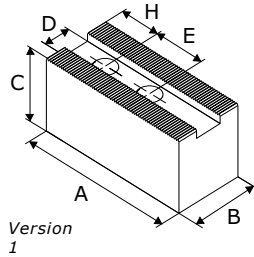
⁸⁾ 4-jaw chuck

¹⁰⁾ 6-jaw chuck

Mors doux SOFT top jaws

Stries 90°
Serration 90°

Acier
Steel



Type de mandrin Chuck type	Indeks Id.-No.	Type Type	A	B	C	D	E	Ecrous Screws	H	S	Version
Stries 1/16" x 90° / Serration 1/16" x 90°											
HFKN-D 110-32; HFKS 110	17 0001 1220	MKS-C 110-1	50	20	40	8	12	M6	11,5	-	1
SP 125-26 ²⁾ ; STP 125 ²⁾	17 0000 6920	MKS-C 125-1	55,5	30	40	11	18	M8	10	-	1
	17 0001 1230	MKS-C 125-2	55,5	30	38	12	16	M8	10	-	1
HFKS 130; STWP 125	17 0000 6920	MKS-C 125-1	55,5	30	40	11	18	M8	10	-	1
AL-D 125; AN-D 125; BB-D 140; BH-D 130; GHDN 125; HB-D 130; KDV 130; ODN 125; PB-D 130; PBI-D 130	17 0001 1230	MKS-C 125-2	55,5	30	38	12	16	M8	10	-	1
AL-D 165; AN-D 165; AP-D 170; BB-D 175; BH-D 165; BHD-FC 165; GHD-FC 165; GHDN 165; HB-D 165; HFKN-D 165-46; HYND-S 180; NT-D170; PB-D 165; PBI-D 165; RC-D 165; SP160-38; STP 160; STWP 160	17 0001 1590	MKS-C 160-3	68	35	60	14	20	M10	15	-	1
	17 0001 1580	MTS-C 160-2	80	35	40	14	20	M10	15	4	2
HFK 160; HFKS 160; KDV 160; KDVG 160; KFMF 160; KFV 160	17 0000 5390	MKS-C 165-1	70	35	40	17	22	M12	15	-	1
	17 0000 5400	MKS-C 165-2	70	40	60	17	22	M12	15	-	1
	17 0000 6960	MTS-C 165-1	78	35	40	17	22	M12	15	4	2
210RCD; AL-D 210; AN-D 210; AP-D 215; AP-D 260 ²⁾ ; APL-D 215; APL-D 260 ²⁾ ; BB-D 210; BH-D 210; BHD-FC 210; BP-D 220; BP-D 260 ²⁾ ; CC 240 Z; CD 200; GHD-FC 210; GHDN 210; HB-D 210; HDB 220; HDL 200; HDN 200; HDN 220; HDN 250S; HFK 200; HFKN-D 210-52; HFKS 200; HYND-S 210; HYND-S 226; KDV 200; KDV 250; KDVG 200; KDVG 250; KFMF 200; KFV 200; LP 205; NT-D 215; NT-D 260 ²⁾ ; NTL-D 260 ²⁾ ; ODL 200; ODN 200; ODN 220; ODN 250S; PB-D 210; PBI-D 210; RC-D 210; SP 200; SP 240-78; STP 200; STP 240; STWP 200	17 0000 6970	MKS-C 200-2	90	40	40	17	22	M12	25	-	1
	17 0000 5440	MKS-C 200-3	90	40	60	17	22	M12	25	-	1
CL-D 200 ³⁾ ; KZF 200 ³⁾ ; KZF-ES 200 ³⁾ ; US-2 CLD 200 ³⁾	17 0000 6990	2MKS-C 200-1	95	80	80	21	28	M16	22	-	1
	17 0001 1730	MKS-C 250-2	95	50E	60	21	28	M16	15	-	1
250RCD; 305RCD; AL-D 250; AL-D 315; AN-D 250; AN-D 315; AP-D 315; APL-D 315; BB-D 250; BB-D 315; BH-D 250; BH-D 315; BHD-FC 250; BHD-FC 315; BP-D 320; CC 350 Z; CD 250; CD 315; GHD 400; GHD-FC 250; GHD-FC 305; GHD-FC400; GHDN 250; GHDN 315; GHDN 400; HB-D 250; HB-D 315; HDB 300; HDL 250; HDL 315; HDL 400; HDN 250; HDN 315; HDN 400; HFK 250; HFK 270; HFK 315; HFKN-D 260-72; HFKN-D 315-91; HFKS 250; HFKS 270; HFKS 315; HYND-S 250; HYND-S 315; KDV 315; KDV 400; KDVG 315; KDVG 400; KFMF 250; KFMF 315; KFV 250; KFV 315; LP 250; NT-D 315; NTL-D 315; ODL 250; ODL 315; ODL 400; ODN 250; ODN 315; ODN 400; PB-D 250; PB-D 315; PBI-D 250; PBI-D 315; RC-D 250; RC-D 305; RC-D 400 ²⁾ ; SP 250; SP 280-92; SP 315; SP 350-115; SP 350-115 ES; SP-L 350-90; STP 250; STP 280; STP 315; STWP 250; STWP 315	17 0000 6980	MTS-C 250-1	120		50	21	28	M16	20	4	2
	17 0000 5240	MKS-C 250-3	120		80	21	28	M16	30	-	1
	17 0000 5460	MTS-C 315-1	140		50	21	28	M16	30	4	2

Mors doux
Soft top jaws

Type du mandrin Chuck type	Indeks Id.-No.	Type Type	A	B	C	D	E	Ecrrous Screws	H	S	Version
CL-D 250 ³⁾ ; KZF 250 ³⁾ ; KZF-ES 250 ³⁾ ; US-2 CLD 250 ³⁾	17 0000 0090	2MKS-C 250-1	110	80	80	25,5	35	M20	20	-	1
CL-D 315 ³⁾ ; KZF 315 ³⁾ ; KZF-ES 315 ³⁾ ; US-2 CLD 315 ³⁾	17 0000 0670	2MKS-C 315-1	125	80	80	25,5	35	M20	28	-	1
Stries 3/32" x 90° / Serration 3/32" x 90°											
AL-D 400; AN-D 400; AP-D 400 ⁷⁾ ; APL-D 400 ⁷⁾ ; APL-D 500 ⁷⁾ ; APL-D 630 ⁷⁾ ; APL-D 800 ⁷⁾ ; BB-AZ-ES 500; BB-AZ-ES 590-220; BB-EXL-SC2G 510-191; BB-EXL-SC2G 660-280; BB-N 400-140; BB-N 460; BB-N 470-191; BB-N 500-205; BB-N 500-230; BB-N 600-275; BB-N ES 400-140; BB-N ES 460; BB-N ES 470-191; BB-N ES 500-205; BB-N ES 500-230; BB-N ES 600-275; BB-N-EXL2G 510-191; BB-N-EXL2G 660-280; BB-SC 600-275; BH-D 400; BH-D 450; BH-D 500; BH-D 630; BH-D 800; BHD-FC 400; BHD-FC 500; BHD-FC 630; CC 470 Z; GHD 500; GHD 610; GHD 640; GHD 800; HFK 400; HFK 500; HFKN-D 400-128; HFKN-D 500-155; HFKS 400; HFKS 500; HYD-S 400; HYD-S 500; HYDL-S 500; HYDL-S 550; HYDL-S 630; HYDL-S 800; HYDLL-S 550; HYDLL-S 630; HYND-S 400; IEP-D 500 ⁴⁾ ; IEP-D 630 ⁴⁾ ; IEP-D 800 ⁴⁾ ; IL-D 500; IL-D 630; IL-D 800; IN-D 500; IN-D 630; IN-D 800; KDV 500; KDVG 500; KFV 400; KFV 500; KFV 630; KFV 800; NT-D 400 ⁷⁾ ; NTL-D 400 ⁷⁾ ; RC-D 500 ⁷⁾	17 0000 7000	MKS-C 400-1	140	60	80	25,5	35	M20	30	-	1
	17 0000 7010	MKS-C 400-2	155	60	90	25,5	35	M20	30	-	1
BB 400; BB 400 ES; LP 380; LP 460; STP 400	17 0000 6490	MKS-C 400-3	155	60	100	25,5	40	M18	35	-	1
BB 500; BB 500 ES; BB 630-265 ES; LP 500; STP 500	17 0000 6500	MKS-C 400-4	195	60	100	25,5	40	M18	37	-	1
BB 630; BB 630-325 ES; BB-AZ-ES 630-275; BB-AZ-ES 750-370; BB-AZ2G 685-275; BB-AZ2G 740-330; BB-N 630-310; BB-N ES 630-325; STP 630	17 0000 6510	MKS-C 600-1	240	75	90	30	65	M24	42	-	4
BB 800; BB 850 ES; BB 1000; BB 1000 ES; BB-AZ2G 800-390; BB-AZ2G 1000-560; BB-EXL-SC2G 900-390; BB-N 800-410; BB-N 1000; BB-N ES 850-375; BB-N ES 1000-560; BB-N-EXL2G 900-390; BB-SC 850-395; BB-SC 1020-565; ST	17 0000 6520	MKS-C 600-2	300	75	90	30	65	M24	68	-	4

³⁾ 2-jaw chuck

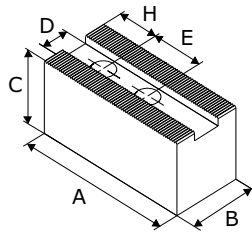
⁴⁾ 6-jaw chuck – please order 2 sets per 3 pcs

⁷⁾ Please check the connecting dimensions

Mors doux Soft top jaws

Stries 90°
Serration 90°

Aluminium
Aluminum



Version 1

Type de mandrin Chuck type	Indeks Id.-No.	Type Type	A	B	C	D	E	Ecrous Screws	H	S	Version
Stries 1/16" x 90° / Serration 1/16" x 90°											
AL-D 125; AN-D 125; BB-D 140; BH-D 130; GHDN 125; HB-D 130; KDV 130; ODN 125; PB-D 130; PBI-D 130	17 0001 1240	MKA-C 125-1	55	30	40	12	16	M8	10	-	1
AL-D 165; AN-D 165; AP-D 170; BB-D 175; BH-D 165; BHD-FC 165; GHD-FC 165; GHDN 165; HB-D 165; HFKN-D 165-46; HYND-S 180; NT-D 170; PB-D 165; PBI-D 165; RC-D 165; SP 160-38; STP 160; STWP 160	17 0000 6260	MKA-C 160-2	80	35	60	14	20	M10	15	-	1
HFK 160; HFKS 160; KDV 160; KDBG 160; KFMF 160; KJV 160	17 0000 6270	MKA-C 165-1	70	40	60	17	22	M12	15	-	1
210RCD; AL-D 210; AN-D 210; AP-D 215; AP-D 260 ⁷⁾ ; APL-D 215; APL-D 260 ⁷⁾ ; BB-D 210; BH-D 210; BHD-FC 210; BP-D 220; BP-D 260 ⁷⁾ ; CC 240 Z; CD 200; GHD-FC 210; GHDN 210; HB-D 210; HDB 220; HDL 200; HDN 200; HDN 220; HDN 250S; HFK 200; HFKN-D 210-52; HFKS 200; HYND-S 210; HYND-S 226; KDV 200; KDV 250; KDBG 200; KDBG 250; KFMF 200; KJV 200; LP 205; NT-D 215; NT-D 260 ⁷⁾ ; NTL-D 260 ⁷⁾ ; ODL 200; ODN 200; ODN 220; ODN 250S; PB-D 210; PBI-D 210; RC-D 210; SP 200; SP 240-78; STP 200; STP 240; STWP 200	17 0000 6280	MKA-C 200-2	90	40	60	17	22	M12	25	-	1
250RCD; 305RCD; AL-D 250; AL-D 315; AN-D 250; AN-D 315; AP-D 315; APL-D 315; BB-D 250; BB-D 315; BH-D 250; BH-D 315; BHD-FC 250; BHD-FC 315; BP-D 320; CC 350 Z; CD 250; CD 315; GHD 400; GHD-FC 250; GHD-FC 305; GHD-FC 400; GHDN 250; GHDN 315; GHDN 400; HB-D 250; HB-D 315; HDB 300; HDL 250; HDL 315; HDL 400; HDN 250; HDN 315; HDN 400; HFK 250; HFK 270; HFK 315; HFKN-D 260-72; HFKN-D 315-91; HFKS 250; HFKS 270; HFKS 315; HYND-S 250; HYND-S 315; KDV 315; KDV 400; KDBG 315; KDBG 400; KFMF 250; KFMF 315; KJV 250; KJV 315; LP 250; NT-D 315; NTL-D 315; ODL 250; ODL 315; ODL 400; ODN 250; ODN 315; ODN 400; PB-D 250; PB-D 315; PBI-D 250; PBI-D 315; RC-D 250; RC-D 305; RC-D 400 ⁷⁾ ; SP 250; SP 280-92; SP 315; SP 350-115; SP 350-115 ES; SP-L 350-90; STP 250; STP 280; STP 315; STWP 250; STWP 315	17 0000 6290	MKA-C 250-1	125	50	80	21	28	M16	30	-	1

Mors doux
Soft top jaws

Type du mandrin Chuck type	Id.-No.	Type Type	A	B	C	D	E	Ecrus Screws	H	S	Version
Srrtries 3/32" x 90° / Serration 3/32" x 90°											
AL-D 400; AN-D 400; AP-D 400 ⁷⁾ ; APL-D 400 ⁷⁾ ; APL-D 500 ⁷⁾ ; APL-D 630 ⁷⁾ ; APL-D 800 ⁷⁾ ; BB-AZ-ES 500; BB-AZ-ES 590-220; BB-EXL-SC2G 510-191; BB-EXL-SC2G 660-280; BB-N 400-140; BB-N 460; BB-N 470-191; BB-N 500-205; BB-N 500-230; BB-N 600-275; BB-N ES 400-140; BB-N ES 460; BB-N ES 470-191; BB-N ES 500-205; BB-N ES 500-230; BB-N ES 600-275; BB-N-EXL2G 510-191; BB-N-EXL2G 660-280; BB-SC 600-275; BH-D 400; BH-D 450; BH-D 500; BH-D 630; BH-D 800; BHD-FC 400; BHD-FC 500; BHD-FC 630; CC 470 Z; GHD 500; GHD 610; GHD 640; GHD 800; HFK 400; HFK 500; HFKN-D 400-128; HFKN-D 500-155; HFKS 400; HFKS 500; HYD-S 400; HYD-S 500; HYDL-S 500; HYDL-S 550; HYDL-S 630; HYDL-S 800; HYDLL-S 550; HYDLL-S 630; HYND-S 400; IEP-D 500 ⁴⁾ ; IEP-D 630 ⁴⁾ ; IEP-D 800 ⁴⁾ ; IL-D 500; IL-D 630; IL-D 800; IN-D 500; IN-D 630; IN-D 800; KDV 500; KDV 500; KDV 400; KDV 500; KDV 630; KDV 800; NT-D 400 ⁷⁾ ; NTL-D 400 ⁷⁾ ; RC-D 500 ⁷⁾	17 0000 7050	MKA-C 400-1	155	60	100	25,5	35	M20	30	-	1

⁴⁾

⁴⁾ 6-jaw chuck – please order 2 sets per 3 pcs

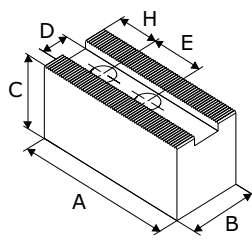
⁷⁾

⁷⁾ Please check the connecting dimensions

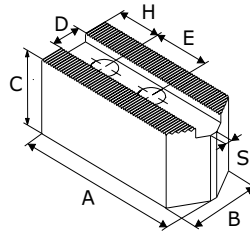
Mors doux Soft top jaws

Stries 60°
Serration 60°

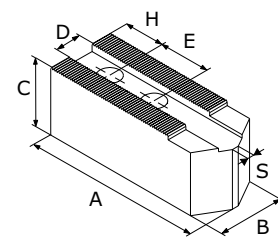
Acier
Steel



Version 1



Version 2



Version 5

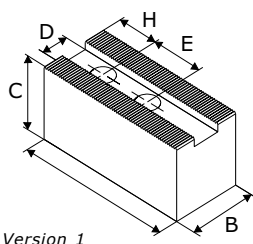
Type du mandrin Chuck type	Indeks Id.-No.	Type Type	A	B	C	D	E	Ecrous Screws	H	S	Version
Stries 1,5mm x 60° / Serration 1,5mm x 60°											
AL-M 165; AN-M 165; AP-M 170; BB-M 175; BH-M 165; BHM-FC 165; HB-M 165; HFKN-M 165-46; NT-M 170; PB-M 165; PBI-M 165; RC-M 165	17 0000 7810	MKS-M 165-1	72	32	32	12	20	M10	15	-	1
	17 0001 1630	MKS-M 165-2	72	35	60	12	20	M10	15	-	1
	17 0000 0840	MTS-M 165-3	75	30	30	12	20	M10	15	13	2
	17 0000 0850	MTS-M 165-4	81	30	30	12	20	M10	15	13	2
	17 0000 7820	MTS-M 165-1	82	32	32	12	20	M10	15	4	5
	17 0001 1760	MTS-M 165-2	82	35	60	12	20	M10	15	4	5
AL-M 210; AN-M 210; AP-M 215; APL-M 215; BB-M 210; BH-M 210; BHM-FC 210; BP-M 220; HB-M 210; HFKN-M 210-52; NT-M 215; PB-M 210; PBI-M 210; RC-M 210	17 0000 0860	MTS-M 210-4	95	35	35	14	25	M12	20	15	2
	17 0000 7830	MKS-M 210-1	95	35	40	14	25	M12	24	-	1
	17 0001 1640	MKS-M 210-2	95	35	60	14	25	M12	24	-	1
	17 0001 1650	MKS-M 210-3	95	40	80	14	25	M12	24	-	1
	17 0000 4750	MKS-M 210-4	95	40	100	14	25	M12	24	-	1
	17 0000 7840	MTS-M 210-1	102	35	40	14	25	M12	20	4	5
	17 0000 0880	MTS-M 210-5	102	35	40	14	25	M12	20	15	2
	17 0000 4760	MTS-M 210-2	102	40	80	14	25	M12	20	4	5
AL-M 250; AN-M 250; AP-M 260; APL-M 260; BB-M 250; BH-M 250; BHM-FC 250; BP-M 260; HB-M 250; HFKN-M 260-72; NT-M 260; NTL-M 260; PB-M 250; PBI-M 250; RC-M 250	17 0000 7080	MKS-M 250-6	90	40	60	16	30	M12	15	-	1
	17 0000 7090	MKS-M 250-7	90	50	80	16	30	M12	15	-	1
	17 0000 0890	MTS-M 250-4	110	40	40	16	30	M12	20	17	2
	17 0000 7850	MKS-M 250-1	110	40	42	16	30	M12	30	-	1
	17 0000 7860	MKS-M 250-2	110	40	60	16	30	M12	30	-	1
	17 0000 1200	MTS-M 250-5	110	40	60	16	30	M12	20	17	2
	17 0001 1660	MKS-M 250-3	110	40	80	16	30	M12	30	-	1
	17 0001 1670	MKS-M 250-4	120	40	100	16	30	M12	30	-	1
	17 0000 1230	MKS-M 250-5	120	40	120	16	30	M12	30	-	1
	17 0000 7100	MKS-M 250-8	120	50	50	16	30	M12	30	-	1
	17 0001 1600	MTS-M 250-1	125	40	42	16	30	M12	30	4	5
	17 0001 1710	MTS-M 250-2	125	40	60	16	30	M12	30	4	5
AL-M 315; AN-M 315; AP-M 315; APL-M 315; BB-M 315; BH-M 315; BHM-FC 315; BP-M 320; GH-M 400; HB-M 315; HFKN-M 315-91; NT-M 315; NTL-M 315; PB-M 315; PBI-M 315; RC-M 305; RC-M 400	17 0001 1610	MKS-M 300-4	129	50	60	21	30	M16	39	-	1
	17 0001 1680	MKS-M 300-5	129	50	80	21	30	M16	39	-	1
	17 0000 1250	MKS-M 300-6	129	50	100	21	30	M16	25	-	1
	17 0000 1260	MKS-M 300-7	129	50	120	21	30	M16	25	-	1
	17 0000 7160	MKS-M 300-9	140	50	100	21	30	M16	30	-	1
	17 0001 1620	MTS-M 300-5	145	50	50	21	30	M16	30	10	5
	17 0000 7170	MTS-M 300-6	145	50	100	21	30	M16	30	10	5
AL-M 400; AN-M 400; AP-M 400 ⁷⁾ ; APL-M 400 ⁷⁾ ; BH-M 400; BH-M 450; BHM-FC 400 ⁷⁾ ; NT-M 400 ⁷⁾ ; NTL-M 400 ⁷⁾	17 0000 3060	MKS-M 380-1	165	60	60	22	43	M20	37	-	1
	17 0000 4100	MKS-M 380-2	165	60	80	22	43	M20	37	-	1
	17 0000 4120	MKS-M 380-3	165	60	120	22	43	M20	37	-	1
	17 0000 7180	MTS-M 380-1	185	60	60	22	43	M20	30	10	5

⁷⁾ Please check the connecting dimensions

Mors doux Soft top jaws

Stries 60°
Serration 60°

Aluminium
Aluminum



Type du mandrin Chuck type	Indeks Id.-No.	Type Type	A	B	C	D	E	Ecrous Screws	H	S	Version
Stries 1,5mm x 60° / Serration 1,5mm x 60°											
AL-M 165; AN-M 165; AP-M 170; BB-M 175; BH-M 165; BHM-FC 165; HB-M 165; HFKN-M 165-46; NT-M 170; PB-M 165; PBI-M 165; RC-M 165	17 0000 7310	MKA-M 165-1	72	35	50	12	20	M10	15	-	1
AL-M 210; AN-M 210; AP-M 215; APL-M 215; BB-M 210; BH-M 210; BHM-FC 210; BP-M 220; HB-M 210; HFKN-M 210-52; NT-M 215; PB-M 210; PBI-M 210; RC-M 210	17 0000 7320	MKA-M 210-1	90	40	60	14	25	M12	20	-	1
AL-M 250; AN-M 250; AP-M 260; APL-M 260; BB-M 250; BH-M 250; BHM-FC 250; BP-M 260; HB-M 250; HFKN-M 260-72; NT-M 260; NTL-M 260; PB-M 250; PBI-M 250; RC-M 250	17 0000 7330	MKA-M 250-1	110	40	60	16	30	M12	25	-	1
AL-M 315; AN-M 315; AP-M 315; APL-M 315; BB-M 315; BH-M 315; BHM-FC 315; BP-M 320; GH-M 400; HB-M 315; HFKN-M 315-91; NT-M 315; NTL-M 315; PB-M 315; PBI-M 315; RC-M 305; RC-M 400	17 0000 7350	MKA-M 300-2	130	50	80	21	30	M16	40	-	1
AL-M 400; AN-M 400; AP-M 400 ⁷⁾ ; APL-M 400 ⁷⁾ ; BH-M 400; BH-M 450; BHM-FC 400 ⁷⁾ ; NT-M 400 ⁷⁾ ; NTL-M 400 ⁷⁾	17 0000 7360	MKA-M 380-2	145	60	80	22	43	M20	40	-	1

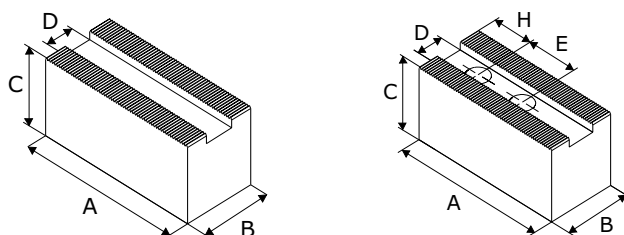
⁷⁾ Please check the connecting dimensions

Mors doux sans passage de vis ou avec sur cde
Soft jaw blanks, without or with bolt holes

GBMO
 Tél : 0148609146
 Fax: 0149633577
 gbmo@gbmo.fr

Stries 90°
 Serration 90°

Acier
 Steel



Typ uchwytu Chuck type	Bez otworów Without bolt holes		Z otworami With bolt holes		A	B	C	D
	Indeks Id.-No.	Typ Type	Indeks Id.-No.	Typ Type				
Uzębienie 1/16" x 90° / Serration 1/16" x 90°								
AL-D 165; AN-D 165; AP-D 170; BB-D 175; BH-D 165; BHD-FC 165; GHD-FC 165; GHDN 165; HB-D 165; HFKN-D 165-46; HYND-S 180; NT-D 170; PB-D 165; PBI-D 165; RC-D 165; SP; 160-38; STP 160; STWP 160	17 0000 4800	MBS-C 165-1	17 0000 4801	MWS-C 165-1	80	40	40	14
210RCD; AL-D 210; AN-D 210; AP-D 215; AP-D 260; APL-D 215; APL-D 260; BB-D 210; BH-D 210; BHD-FC 210; BP-D 220; BP-D 260; CC 240 Z; CD 200; GHD-FC 210; GHDN 210; HB-D 210; HDB 220; HDL 200; HDN 200; HDN 220; HDN 250S; HFK 160; HFK 200; HFKN-D 210-52; HFKS 160; HFKS 200; HYND-S 210; HYND-S 226; KDV 160; KDV 200; KDV 250; KDVG 160; KDVG 200; KDVG 250; KFMF 160; KFMF 200; KVF 160; KVF 200; LP 205; NT-D 215; NT-D 260; NTL-D 260; ODL 200; ODN 200; ODN 220; ODN 250S; PB-D 210; PBI-D 210; RC-D 210; SP 200; SP 240-78; STP 200; STP 240; STWP 200	17 0000 4810	MBS-C 200-1	17 0000 4811	MWS-C 200-1	70	40	40	17
	17 0000 4820	MBS-C 200-2	17 0000 4821	MWS-C 200-2	70	40	60	17
	17 0000 4830	MBS-C 200-3	17 0000 4831	MWS-C 200-3	90	40	40	17
	17 0000 4840	MBS-C 200-4	17 0000 4841	MWS-C 200-4	90	40	60	17
	17 0000 4850	MBS-C 200-5	17 0000 4851	MWS-C 200-5	90	40	80	17
	17 0000 4860	MBS-C 200-6	17 0000 4861	MWS-C 200-6	90	40	100	17
	17 0000 4870	MBS-C 200-7	17 0000 4871	MWS-C 200-7	90	40	120	17
	17 0000 4880	MBS-C 200-8	17 0000 4881	MWS-C 200-8	105	40	40	17
	17 0000 4890	MBS-C 200-9	17 0000 4891	MWS-C 200-9	105	40	60	17
250RCD; 305RCD; AL-D 250; AL-D 315; AN-D 250; AN-D 315; AP-D 315; APL-D 315; BB-D 250; BB-D 315; BH-D 250; BH-D 315; BHD-FC 250; BHD-FC 315; BP-D 320; CC 350 Z; CD 250; CD 315; CL-D 200 ³⁾ ; GHD 400; GHD-FC 250; GHD-FC 305; GHD-FC 400; GHDN 250; GHDN 315; GHDN 400; HB-D 250; HB-D 315; HDB 300; HDL 250; HDL 315; HDL 400; HDN 250; HDN 315; HDN 400; HFK 250; HFK 270; HFK 315; HFKN-D 260-72; HFKN-D 315-91; HFKS 250; HFKS 270; HFKS 315; HYND-S 250; HYND-S 315; KDV 315; KDV 400; KDVG 315; KDVG 400; KFMF 250; KFMF 315; KVF 250; KVF 315; KZF 200 ³⁾ ; KZF-ES 200 ³⁾ ; LP 250; NT-D 315; NTL-D 315; ODL 250; ODL 315; ODL 400; ODN 250; ODN 315; ODN 400; PB-D 250; PB-D 315; PBI-D 250; PBI-D 315; RC-D 250; RC-D 305; RC-D 400; SP 250; SP 280-92; SP 315; SP 350-115; SP 350-115 ES; SP-L 350-90; STP 250; STP 280; STP 315; STWP 250; STWP 315; US-2 CLD 200 ³⁾	17 0000 4900	MBS-C 250-1	17 0000 4901	MWS-C 250-1	90	45	45	21
	17 0000 4910	MBS-C 250-2	17 0000 4911	MWS-C 250-2	90	45	80	21
	17 0000 4920	MBS-C 250-3	17 0000 4921	MWS-C 250-3	110	45	45	21
	17 0000 4930	MBS-C 250-4	17 0000 4931	MWS-C 250-4	110	45	80	21
	17 0000 4940	MBS-C 250-5	17 0000 4941	MWS-C 250-5	125	50	50	21
	17 0000 4950	MBS-C 250-6	17 0000 4951	MWS-C 250-6	125	50	80	21
	17 0000 4960	MBS-C 250-7	17 0000 4961	MWS-C 250-7	125	50	100	21
	17 0000 4970	MBS-C 250-8	17 0000 4971	MWS-C 250-8	125	50	120	21
	17 0000 4980	MBS-C 250-9	17 0000 4981	MWS-C 250-9	140	50	60	21
	17 0000 4990	MBS-C 250-10	17 0000 4991	MWS-C 250-10	140	50	80	21

³⁾ Uchwyt 2-szczękowy

³⁾ 2-jaw chuck

For jaws with bolt holes please indicate H and E dimensions

**Slot width 14 mm,
 bored for M10**
 Minimum values:
 H = 12 mm, E = 16 mm

**Slot width 17 mm,
 bored for M12**
 Minimum values:
 H = 12 mm, E = 19 mm

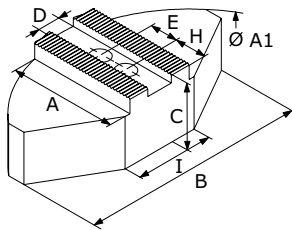
**Slot width 21 mm,
 bored for M16**
 Minimum values:
 H = 15 mm, E = 25 mm

AUTOBLOK-SMW

Mors doux enveloppants Soft full grip jaws

Stries 90°
Serration 90°

Acier
Steel



Version 1

Type du mandrin Chuck type	Indeks Id.-No.	Type Type	A	B	C	D	E	Ecrous Screws	H	I	A1	Version
Stries 1/16" x 90° / Serration 1/16" x 90°												
AL-D 165; AN-D 165; AP-D 170; BB-D 175; BH-D 165; BHD-FC 165; GHD-FC 165; GHDN 165; HB-D 165; HFKN-D 165-46; HYND-S 180; NT-D 170; PB-D 165; PBI-D 165; RC-D 165; SP 160-38; STP 160; STWP 160	17 0000 6580	GPS-C 160-3	60	120	60	14	20	M10	25	40	160	1
HFK 160; HFKS 160; KDV 160; KDVG 160; KFMF 160; KFV 160	17 0000 6590	GPS-C 165-1	60	120	60	17	22	M12	25	40	160	1
210RCD; AL-D 210; AN-D 210; AP-D 215; APL-D 215; BB-D 210; BH-D 210; BHD-FC 210; BP-D 220; CD 200; GHD-FC 210; GHDN 210; HB-D 210; HDB 220; HDL 200; HDN 200; HDN 220; HFK 200; HFKN-D 210-52; HFKS 200; HYND-S 210; HYND-S 226; KDV 200; KDVG 200; KFMF 200; KFV 200; LP 205; NT-D 215; ODL 200; ODN 200; ODN 220; PB-D 210; PBI-D 210; RC-D 210; SP 200; STP 200; STWP 200	17 0000 1300	GPS-C 200-1	70	140	60	17	22	M12	35	64	200	1
	17 0000 6560	GPS-C 200-2	70	140	75	17	22	M12	35	64	200	1
AP-D 260 ^{?)} ; APL-D 260 ^{?)} ; BP-D 260 ^{?)} ; CC 240 Z; HDN 250S; KDV 250; KDVG 250; NT-D 260 ^{?)} ; NTL-D 260 ^{?)} ; ODN 250S; SP 240-78; STP 240	17 0000 7390	GPS-C 250-1	79	180	60	17	22	M12	44,5	104	250	1
250RCD; AL-D 250; AN-D 250; BB-D 250; BH-D 250; BHD-FC 250; CD 250; GHD-FC 250; GHDN 250; HB-D 250; HDL 250; HDN 250; HFK 250; HFK 270; HFKN-D 260-72; HFKS 250; HFKS 270; HYND-S 250; KFMF 250; KFV 250; LP 250; ODL 250; ODN 250; PB-D 250; PBI-D 250; RC-D 250; SP 250; SP 280-92; STP 250; STP 280; STWP 250	17 0000 1310	GPS-C 250-2	80	180	70	21	28	M16	30	104	250	1
	17 0000 6570	GPS-C 250-3	80	180	100	21	28	M16	30	104	250	1
305RCD; AL-D 315; AN-D 315; AP-D 315; APL-D 315; BB-D 315; BH-D 315; BHD-FC 315; BP-D 320; CC 350 Z; CD 315; GHD 400; GHD-FC 305; GHD-FC 400; GHDN 315; GHDN 400; HB-D 315; HDB 300; HDL 315; HDL 400; HDN 315; HDN 400; HFK 315; HFKN-D 315-91; HFKS 315; HYND-S 315; KDV 315; KDV 400; KDVG 315; KDVG 400; KFMF 315; KFV 315; NT-D 315; NTL-D 315; ODL 315; ODL 400; ODN 315; ODN 400; PB-D 315; PBI-D 315; RC-D 305; RC-D 400 ^{?)} ; SP 315; SP 350-115; SP 350-115 ES; SP-L 350-90; STP 315; STWP 315	17 0000 1320	GPS-C 315-1	110	240	70	21	28	M16	60	120	320	1

Mors doux enveloppants
Soft full grip jaws

Type du mandrin	Indeks	Type	A	B	C	D	E	Ecrous Screws	H	I	A1	Version
Stries 3/32" x 90° / Serration 3/32" x 90°												
AL-D 400; AN-D 400; AP-D 400 ⁷⁾ ; APL-D 400 ⁷⁾ ; APL-D 500 ⁷⁾ ; APL-D 630 ⁷⁾ ; APL-D 800 ⁷⁾ ; BB-AZ-ES 500; BB-AZ-ES 590-220; BB-EXL-SC2G 510-191; BB-EXL-SC2G 660-280; BB-N 400-140; BB-N 460; BB-N 470-191; BB-N 500-205; BB-N 500-230; BB-N 600-275; BB-N ES 400-140; BB-N ES 460; BB-N ES 470-191; BB-N ES 500-205; BB-N ES 500-230; BB-N ES 600-275; BB-N-EXL2G 510-191; BB-N-EXL2G 660-280; BB-SC 600-275; BH-D 400; BH-D 450; BH-D 500; BH-D 630; BH-D 800; BHD-FC 400; BHD-FC 500; BHD-FC 630; CC 470 Z; GHD 500; GHD 610; GHD 640; GHD 800; HFK 400; HFK 500; HFKN-D 400-128; HFKN-D 500-155; HFKS 400; HFKS 500; HYD-S 400; HYD-S 500; HYDL-S 500; HYDL-S 550; HYDL-S 630; HYDL-S 800; HYDLL-S 550; HYDLL-S 630; HYND-S 400; IEP-D 500 ⁴⁾ ; IEP-D 630 ⁴⁾ ; IEP-D 800 ⁴⁾ ; IL-D 500; IL-D 630; IL-D 800; IN-D 500; IN-D 630; IN-D 800; KDV 500; KDVG 500; KFV 400; KFV 500; KFV 630; KFV 800; NT-D 400 ⁷⁾ ; NTL-D 400 ⁷⁾ ; RC-D 500 ⁷⁾	17 0001 1690	GPS-C 400-1	155	330	85	25,5	35	M20	85	150	440	1

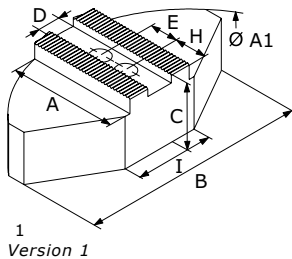
⁴⁾
⁷⁾

⁴⁾ 6-jaw chuck – please order 2 sets per 3 pcs
⁷⁾ Please check the connecting dimensions

Mors doux enveloppants Soft full grip jaws

Stries 90°
Serration 90°

Aluminium
Aluminum



Type du mandrin Chuck type	Indeks Id.-No.	Type Type	A	B	C	D	E	Ecrous Screws	H	I	A1	Version
Stries 1/16" x 90° / Serration 1/16" x 90°												
AL-D 165; AN-D 165; AP-D 170; BB-D 175; BH-D 165; BHD-FC 165; GHD-FC 165; GHDN 165; HB-D 165; HFKN-D 165-46; HYND-S 180; NT-D 170; PB-D 165; PBI-D 165; RC-D 165; SP 160-38; STP 160; STWP 160	17 0000 6300	GPA-C 160-2	59,5	120	58	14	20	M10	25	40	165	1
HFK 160; HFKS 160; KDV 160; KDVG 160; KFMF 160; KFV 160	17 0000 6310	GPA-C 165-1	59,5	120	58	17	22	M12	22	40	165	1
210RCD; AL-D 210; AN-D 210; AP-D 215; APL-D 215; BB-D 210; BH-D 210; BHD-FC 210; BP-D 220; CD 200; GHD-FC 210; GHDN 210; HB-D 210; HDB 220; HDL 200; HDN 200; HDN 220; HFK 200; HFKN-D 210-52; HFKS 200; HYND-S 210; HYND-S 226; KDV 200; KDVG 200; KFMF 200; KFV 200; LP 205; NT-D 215; ODL 200; ODN 200; ODN 220; PB-D 210; PBI-D 210; RC-D 210; SP 200; STP 200; STWP 200	17 0000 6320	GPA-C 200-1	72,5	140	58	17	22	M12	35	50	200	1
	17 0000 6330	GPA-C 200-2	72,5	140	75	17	22	M12	35	50	200	1
250RCD; AL-D 250; AN-D 250; BB-D 250; BH-D 250; BHD-FC 250; CD 250; GHD-FC 250; GHDN 250; HB-D 250; HDL 250; HDN 250; HFK 250; HFK 270; HFKN-D 260-72; HFKS 250; HFKS 270; HYND-S 250; KFMF 250; KFV 250; LP 250; ODL 250; ODN 250; PB-D 250; PBI-D 250; RC-D 250; SP 250; SP 280-92; STP 250; STP 280; STWP 250	17 0000 6340	GPA-C 250-1	87,5	180	78	21	28	M16	40	70	250	1
	17 0000 6350	GPA-C 250-2	87,5	180	100	21	28	M16	40	70	250	1
305RCD; AL-D 315; AN-D 315; AP-D 315; APL-D 315; BB-D 315; BH-D 315; BHD-FC 315; BP-D 320; CC 350 Z; CD 315; GHD 400; GHD-FC 305; GHD-FC 400; GHDN 315; GHDN 400; HB-D 315; HDB 300; HDL 315; HDL 400; HDN 315; HDN 400; HFK 315; HFKN-D 315-91; HFKS 315; HYND-S 315; KDV 315; KDV 400; KDVG 315; KDVG 400; KFMF 315; KFV 315; NT-D 315; NTL-D 315; ODL 315; ODL 400; ODN 315; ODN 400; PB-D 315; PBI-D 315; RC-D 305; RC-D 400 ⁷⁾ ; SP 315; SP 350-115; SP 350-115 ES; SP-L 350-90; STP 315; STWP 315	17 0000 6360	GPA-C 315-1	117	240	78	21	28	M16	70	80	320	1

Mors doux enveloppants Soft full grip jaws

Stries 90°
Serration 90°

Type du mandrin Chuck type	Indeks Id.-No.	Type	A	B	C	D	E	Ecrous Screws	H	I	A1	Version
Stries 3/32" x 90° / Serration 3/32" x 90°												
AL-D 400; AN-D 400; AP-D 400 ⁴⁾ ; APL-D 400 ⁷⁾ ; APL-D 500 ⁷⁾ ; APL-D 630 ⁷⁾ ; APL-D 800 ⁷⁾ ; BB-AZ-ES 500; BB-AZ-ES 590-220; BB-EXL-SC2G 510-191; BB-EXL-SC2G 660-280; BB-N 400-140; BB-N 460; BB-N 470-191; BB-N 500-205; BB-N 500-230; BB-N 600-275; BB-N ES 400-140; BB-N ES 460; BB-N ES 470-191; BB-N ES 500-205; BB-N ES 500-230; BB-N ES 600-275; BB-N-EXL2G 510-191; BB-N-EXL2G 660-280; BB-SC 600-275; BH-D 400; BH-D 450; BH-D 500; BH-D 630; BH-D 800; BHD-FC 400; BHD-FC 500; BHD-FC 630; CC 470 Z; GHD 500; GHD 610; GHD 640; GHD 800; HFK 400; HFK 500; HFKN-D 400-128; HFKN-D 500-155; HFKS 400; HFKS 500; HYD-S 400; HYD-S 500; HYDL-S 500; HYDL-S 550; HYDL-S 630; HYDL-S 800; HYDLL-S 550; HYDLL-S 630; HYND-S 400; IEP-D 500 ⁴⁾ ; IEP-D 630 ⁴⁾ ; IEP-D 800 ⁴⁾ ; IL-D 500; IL-D 630; IL-D 800; IN-D 500; IN-D 630; IN-D 800; KDV 500; KDBG 500; KFB 400; KFB 500; KFB 630; KFB 800; NT-D 400 ⁷⁾ ; NTL-D 400 ⁷⁾ ; RC-D 500 ⁷⁾	17 0001 1770		160	330	98	25,5	35	M20	85	150	440	1

⁴⁾

⁷⁾

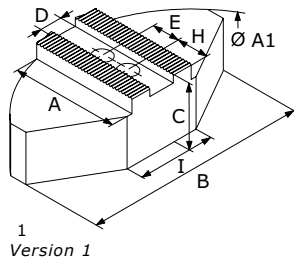
⁴⁾ 6-jaw chuck – please order 2 sets per 3 pcs

⁷⁾ Please check the connecting dimensions

Mors doux enveloppants Soft full grip jaws

Stries 60°
Serration 60°

Acier
Steel

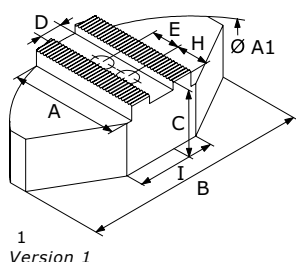


Type du mandrin Chuck type	Indeks Id.-No.	Type	A	B	C	D	E	Ecrous Screws	H	I	A1	Version
Stries 1,5mm x 60° / Serration 1,5mm x 60°												
AL-M 165; AN-M 165; AP-M 170; BB-M 175; BH-M 165; BHM-FC 165; HB-M 165; HFKN-M 165-46; NT-M 170; PB-M 165; PBI-M 165; RC-M 165	17 0000 1380	GPS-M 165-1	60	120	50	12	20	M10	25	50	160	1
AL-M 210; AN-M 210; AP-M 215; APL-M 215; BB-M 210; BH-M 210; BHM-FC 210; BP-M 220; HB-M 210; HFKN-M 210-52; NT-M 215; PB-M 210; PBI-M 210; RC-M 210	17 0000 1390	GPS-M 210-1	70	140	60	14	25	M12	30	70	200	1
	17 0000 6610	GPS-M 210-2	70	140	80	14	25	M12	30	70	200	1
AL-M 250; AN-M 250; AP-M 260; APL-M 260; BB-M 250; BH-M 250; BHM-FC 250; BP-M 260; HB-M 250; HFKN-M 260-72; NT-M 260; NTL-M 260; PB-M 250; PBI-M 250; RC-M 250	17 0000 1400	GPS-M 250-1	80	180	60	16	30	M12	30	100	250	1
	17 0000 6620	GPS-M 250-2	80	180	80	16	30	M12	30	100	250	1
AL-M 315; AN-M 315; AP-M 315; APL-M 315; BB-M 315; BH-M 315; BHM-FC 315; BP-M 320; GH-M 400; HB-M 315; HFKN-M 315-91; NT-M 315; NTL-M 315; PB-M 315; PBI-M 315; RC-M 305; RC-M 400	17 0000 1410	GPS-M 300-2	110	240	70	21	30	M16	45	120	300	1

Mors doux enveloppants Soft full grip jaws

Stries 60°
Serration 60°

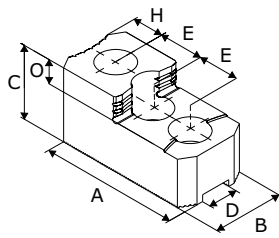
Aluminium
Aluminum



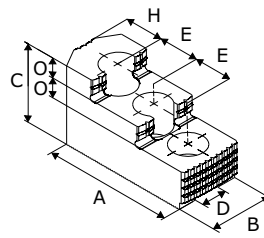
Type du mandrin Chuck type	Indeks Id.-No.	Type	A	B	C	D	E	Ecrous Screws	H	I	A1	Version
Stries 1,5mm x 60° / Serration 1,5mm x 60°												
AL-M 165; AN-M 165; AP-M 170; BB-M 175; BH-M 165; BHM-FC 165; HB-M 165; HFKN-M 165-46; NT-M 170; PB-M 165; PBI-M 165; RC-M 165	17 0000 6370	GPA-M 165-1	59,5	120	58	12	20	M10	25	40	165	1
AL-M 210; AN-M 210; AP-M 215; APL-M 215; BB-M 210; BH-M 210; BHM-FC 210; BP-M 220; HB-M 210; HFKN-M 210-52; NT-M 215; PB-M 210; PBI-M 210; RC-M 210	17 0000 6380	GPA-M 210-1	72,5	140	58	14	25	M12	35	50	200	1
	17 0000 6390	GPA-M 210-2	72,5	140	80	14	25	M12	35	50	200	1
AL-M 250; AN-M 250; AP-M 260; APL-M 260; BB-M 250; BH-M 250; BHM-FC 250; BP-M 260; HB-M 250; HFKN-M 260-72; NT-M 260; NTL-M 260; PB-M 250; PBI-M 250; RC-M 250	17 0000 6400	GPA-M 250-1	87,5	180	58	16	30	M12	40	70	250	1
	17 0000 6410	GPA-M 250-2	87,5	180	80	16	30	M12	40	70	250	1
AL-M 315; AN-M 315; AP-M 315; APL-M 315; BB-M 315; BH-M 315; BHM-FC 315; BP-M 320; GH-M 400; HB-M 315; HFKN-M 315-91; NT-M 315; NTL-M 315; PB-M 315; PBI-M 315; RC-M 305; RC-M 400	17 0000 6430	GPA-M 300-2	117	240	78	21	30	M16	45	80	320	1

Mors durs réversibles Hard stepped top jaws

Stries 90°
Serration 90°



Version 1



Version 2

Type du mandrin Chuck type	Indeks Id.-No.	Type	A	B	C	D	E	Ecrous Screws	H	O	Version
Stries 1/16" x 90° / Serration 1/16" x 90°											
SP 125-26 ⁷⁾ ; STP 125 ⁷⁾	17 0000 7440	SGT-C 125-1	58,5	26	40	11	16	M8	14,5	9	2
	17 0000 1460	SGT-C 160-1	58	30	34	12	16	M8	13	8,5	2
HFKS 130; STWP 125	17 0000 7440	SGT-C 125-1	58,5	26	40	11	16	M8	14,5	9	2
AL-D 125; AN-D 125; BB-D 140; BH-D 130; GHDN 125; HB-D 130; KDV 130; ODN 125; PB-D 130; PBI-D 130	17 0000 1460	SGT-C 160-1	58	30	34	12	16	M8	13	8,5	2
AL-D 165; AN-D 165; AP-D 170; BB-D 175; BH-D 165; BHD-FC 165; GHD-FC 165; GHDN 165; HB-D 165; HFKN-D 165-46; HYND-S 180; NT-D 170; PB-D 165; PBI-D 165; RC-D 165; SP 160-38; STP 160; STWP 160	17 0000 1470	SGT-C 160-2	65	34	40	14	16,5	M10	17,5	9,5	2
HFK 160; HFKS 160; KDV 160; KDBG 160; KFMF 160; Kfv 160	17 0000 7460	SGT-C 165-1	64,7	35	40	17	19	M12	28	10	2
	17 0000 7470	SGT-C 165-2	72,5	40	49	17	19	M12	18	12	2
210RCD; AL-D 210; AN-D 210; AP-D 215; AP-D 260 ⁷⁾ ; APL-D 215; APL-D 260 ⁷⁾ ; BB-D 210; BH-D 210; BHD-FC 210; BP-D 220; BP-D 260 ⁷⁾ ; CC 240 Z; CD 200; GHD-FC 210; GHDN 210; HB-D 210; HDB 220; HDL 200; HDN 200; HDN 220; HDN 250S; HFK 200; HFKN-D 210-52; HFKS 200; HYND-S 210; HYND-S 226; KDV 200; KDV 250; KDBG 200; KDBG 250; KFMF 200; Kfv 200; LP 205; NT-D 215; NT-D 260 ⁷⁾ ; NTL-D 260 ⁷⁾ ; ODL 200; ODN 200; ODN 220; ODN 250S; PB-D 210; PBI-D 210; RC-D 210; SP 200; SP 240-78; STP 200; STP 240; STWP 200	17 0000 1480	SGT-C 200-1	83	40	46	17	23	M12	20	10,5	2
250RCD; AL-D 250; AN-D 250; BB-D 250; BH-D 250; BHD-FC 250; CD 250; GHD-FC 250; GHDN 250; HB-D 250; HDL 250; HDN 250; HFK 250; HFK 270; HFKN-D 260-72; HFKS 250; HFKS 270; HYND-S 250; KFMF 250; Kfv 250; LP 250; ODL 250; ODN 250; PB-D 250; PBI-D 250; RC-D 250; SP 250; SP 280-92; STP 250; STP 280; STWP 250	17 0000 1490	SGT-C 250-1	106	45	56	21	30	M16	27	13,5	2
305RCD; AL-D 315; AN-D 315; AP-D 315; APL-D 315; BB-D 315; BH-D 315; BHD-FC 315; BP-D 320; CC 350 Z; CD 315; GHD 400; GHD-FC 305; GHD-FC 400; GHDN 315; GHDN 400; HB-D 315; HDB 300; HDL 315; HDL 400; HDN 315; HDN 400; HFK 315; HFKN-D 315-91; HFKS 315; HYND-S 315; KDV 315; KDV 400; KDBG 315; KDBG 400; KFMF 315; Kfv 315; NT-D 315; NTL-D 315; ODL 315; ODL 400; ODN 315; ODN 400; PB-D 315; PBI-D 315; RC-D 305; RC-D 400 ⁷⁾ ; SP 315; SP 350-115; SP 350-115 ES; SP-L 350-90; STP 315; STWP 315	17 0000 1500	SGT-C 315-1	124	50	56	21	30	M16	45	13,5	2

Mors durs réversibles
Hard stepped top jaws

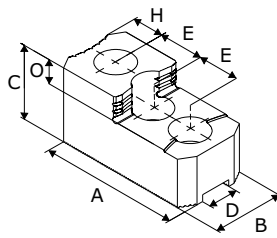
Type du mandrin Chuck type	Indeks Id.-No.	Type	A	B	C	D	E	Ecrrous Screws	H	O	Version
Stries 3/32" x 90° / Serration 3/32" x 90°											
AL-D 400; AN-D 400; AP-D 400 ⁴⁾ ; APL-D 400 ⁷⁾ ; APL-D 500 ⁷⁾ ; APL-D 630 ⁷⁾ ; APL-D 800 ⁷⁾ ; BB-AZ-ES 500; BB-AZ-ES 590-220; BB-EXL-SC2G 510-191; BB-EXL-SC2G 660-280; BB-N 400-140; BB-N 460; BB-N 470-191; BB-N 500-205; BB-N 500-230; BB-N 600-275; BB-N ES 400-140; BB-N ES 460; BB-N ES 470-191; BB-N ES 500-205; BB-N ES 500-230; BB-N ES 600-275; BB-N-EXL2G 510-191; BB-N-EXL2G 660-280; BB-SC 600-275; BH-D 400; BH-D 450; BH-D 500; BH-D 630; BH-D 800; BHD-FC 400; BHD-FC 500; BHD-FC 630; CC 470 Z; GHD 500; GHD 610; GHD 640; GHD 800; HFK 400; HFK 500; HFKN-D 400-128; HFKN-D 500-155; HFKS 400; HFKS 500; HYD-S 400; HYD-S 500; HYDL-S 500; HYDL-S 550; HYDL-S 630; HYDL-S 800; HYDLL-S 550; HYDLL-S 630; HYND-S 400; IEP-D 500 ⁴⁾ ; IEP-D 630 ⁴⁾ ; IEP-D 800 ⁴⁾ ; IL-D 500; IL-D 630; IL-D 800; IN-D 500; IN-D 630; IN-D 800; KDV 500; KDVG 500; KFV 400; KFV 500; KFV 630; KFV 800; NT-D 400 ⁷⁾ ; NTL-D 400 ⁷⁾ ; RC-D 500 ⁷⁾	17 0000 1520	SGT-C 400-1	141	60	75	25,5	38	M20	38	19	2
	17 0000 1530	SGT-C 600-1	146	74	74	25,5	38	M20	47	32	1
BB 400; BB 400 ES; BB 500; BB 500 ES; BB 630-265 ES; LP 380; LP 460; LP 500; STP 400; STP 500	17 0000 7480	SGT-C 400-2	160	57	73	25,5	42	M18	43	22	1
BB 630; BB 630-325 ES; BB-AZ-ES 630-275; BB-AZ-ES 750-370; BB-AZ2G 685-275; BB-AZ2G 740-330; BB-N 630-310; BB-N ES 630-325; STP 630	17 0000 7490	SGT-C 600-2	174	75	88	30	50	M24	44,5	30	1
BB 800; BB 850 ES; BB 1000; BB 1000 ES; BB-AZ2G 800-390; BB-AZ2G 1000-560; BB-EXL-SC2G 900-390; BB-N 800-410; BB-N 1000; BB-N ES 850-375; BB-N ES 1000-560; BB-N-EXL2G 900-390; BB-SC 850-395; BB-SC 1020-565; STP 800	17 0000 7500	SGT-C 800-1	250	75	105	30	60	M24	92	22	2

4)

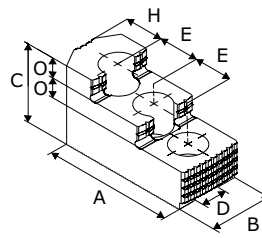
 4) 6-jaw chuck – please order 2 sets per 3 pcs
 7) Please check the connecting dimensions

Mors durs réversibles Hard stepped top jaws

Stries 60°
Serration 60°



Version 1



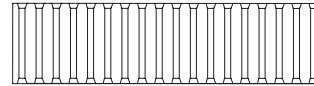
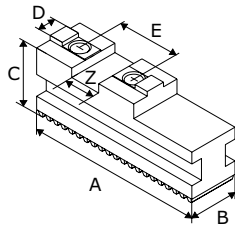
Version 2

Type du mandrin Chuck type	Indeks Id.-No.	Type	A	B	C	D	E	Ecrous Screws	H	O	Version
Stries 1,5mm x 60° / Serration 1,5mm x 60°											
AL-M 165; AN-M 165; AP-M 170; BB-M 175; BH-M 165; BHM-FC 165; HB-M 165; HFKN-M 165-46; NT-M 170; PB-M 165; PBI-M 165; RC-M 165	17 0000 1540	SGT-M 165-1	67	31	36	12	20	M10	14	12	1
AL-M 210; AN-M 210; AP-M 215; APL-M 215; BB-M 210; BH-M 210; BHM-FC 210; BP-M 220; HB-M 210; HFKN-M 210-52; NT-M 215; PB-M 210; PBI-M 210; RC-M 210	17 0000 7510	SGT-M 210-1	79	32	38	14	25	M12	16	12	1
	17 0000 1550	SGT-M 210-2	87	35	51	14	25	M12	20,5	12	2
AL-M 250; AN-M 250; AP-M 260; APL-M 260; BB-M 250; BH-M 250; BHM-FC 250; BP-M 260; HB-M 250; HFKN-M 260-72; NT-M 260; NTL-M 260; PB-M 250; PBI-M 250; RC-M 250	17 0000 1560	SGT-M 250-1	101	40	54	16	30	M12	23	13	2
AL-M 315; AN-M 315; AP-M 315; APL-M 315; BB-M 315; BH-M 315; BHM-FC 315; BP-M 320; GH-M 400; HB-M 315; HFKN-M 315-91; NT-M 315; NTL-M 315; PB-M 315; PBI-M 315; RC-M 305; RC-M 400	17 0000 1570	SGT-M 300-3	103	50	52	21	30	M16	22,5	17	1
	17 0000 7530	SGT-M 300-4	128	50	62	21	30	M16	46	14	2
AL-M 400; AN-M 400; AP-M 400 ⁷⁾ ; APL-M 400 ⁷⁾ ; BH-M 400; BH-M 450; BHM-FC 400 ⁷⁾ ; NT-M 400 ⁷⁾ ; NTL-M 400 ⁷⁾	17 0000 3170	SGT-M 380-1	149	62	86	22	43	M20	30,5	20	2

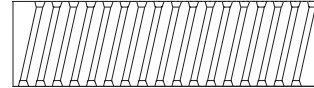
7)

⁷⁾ Please check the connecting dimensions

Semelles de base pour changement rapide Base jaws



System Reishauer / Reishauer system

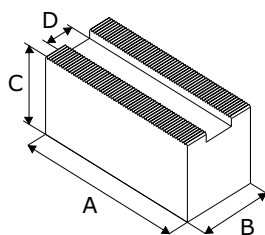


System Forkardt / Forkardt system

Type du mandrin Chuck type	Indeks Id.-No.	Typ Type	A	B	C	D	E	Vis Screws	Z
Systeme Reishauer – denture droite / Reishauer system – straight serration									
KNCS 140; KNCS-N 140-35	17 0000 2840	SPT-ZR 140-1	56	20	27,5	8	32	M8	18
HG 160; HG-N 160-46; KNCS 160; KNCS 175; KNCS-N 170-43; KNCS-N 170-43; KNCS-N 170-43; RMG 160	17 0000 2850	SPT-ZR 160-1	65	20	27,5	8	32	M8	18
HG 200; HG-N 210-60; KNCS 200; KNCS 210; KNCS-N 210-52; KNCS-N 225-66; KNCS-N 225-66; RMG 200	17 0000 2860	SPT-ZR 200-1	85	22	29,5	10	40	M8	20
HG 250; HG-N 260-81; KNCS 250; KNCS 260; KNCS-N 260-78; KNCS-N 275-86; RMG 250	17 0000 2870	SPT-ZR 250-1	104	26	37	12	40	M12	20
HG 315; HG-N 315-102; KNCS 315; KNCS-N 325-104; KNCS-N 340-117	17 0000 2880	SPT-ZR 315-1	115	32	43	12	40	M12	20
HG 400; HG-N 400-128; KNCS 400; KNCS-N 400-128; RMG 315	17 0000 2890	SPT-ZR 400-1	125	32	43	12	54	M12	26
HG 500; HG-N 500-165; KNCS 500; KNCS-N 500-155	17 0000 2900	SPT-ZR 500-1	160	45	57	18	60	M16	30
HG 630; HG-N 630-254; KNCS 630; KNCS-N 630-165	17 0000 2910	SPT-ZR 630-1	200	45	57	18	60	M16	30
Systeme Forkardt – denture inclinée / Forkardt system – angled serration									
HG-F 160-46	17 0000 2920	SPT-ZF 160-1	74	20	27	8	32	M8x1	18
HG-F 210-60	17 0000 2930	SPT-ZF 200-1	90	22	32	10	40	M8x1	20
HG-F 260-81	17 0000 2940	SPT-ZF 250-1	110	26	37	12	40	M12x1,5	20
HG-F 315-102	17 0000 2950	SPT-ZF 315-1	125	32	43	12	54	M12x1,5	26
HG-F 400-128; HG-F 500-165	17 0000 2960	SPT-ZF 400-1	160	45	51	18	60	M16x1,5	30
HG-F 630-254	17 0000 2970	SPT-ZF 630-1	230	65	58	24	82	M20	40

Barres striées Serrated Bars

Acier
Steel



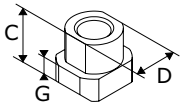
Fabricant Fabricant	Indeks Id.-No.	Typ Type	A	B	C	D
Stries 1/16" x 90° / Serration 1/16" x 90°						
Autoblok-SMW; Berg; Bison; Forkardt; Röhm; Schunk	17 0000 6110	LKS-C 12-1	420	35	60	12
	17 0000 6120	LKS-C 14-1	420	35	60	14
	17 0000 6130	LKS-C 17-1	420	40	60	17
	17 0000 6140	LKS-C 17-2	420	40	100	17
	17 0000 6150	LKS-C 21-1	420	50	60	21
	17 0000 5940	LKS-C 21-2	420	50	80	21
	17 0000 6160	LKS-C 21-3	420	50	120	21
Stries 1,5mm x 60° / Serration 1,5mm x 60°						
Autoblok-SMW; Autogrip; Bison; Howa; Kitagawa; MMK-Matsumoto; Röhm; Samchully; Schunk; Seoam; Strong; Tonfou	17 0000 6170	LKS-M 12-1	420	35	60	12
	17 0000 6179	LKS-M 14-1	420	35	60	14
	17 0000 6180	LKS-M 14-2	420	40	80	14
	17 0000 6190	LKS-M 14-3	420	60	60	14
	17 0000 5829	LKS-M 16-1	420	40	60	16
	17 0000 5930	LKS-M 16-2	420	40	80	16
	17 0000 6200	LKS-M 16-3	420	60	60	16
	17 0000 5931	LKS-M 16-4	420	40	100	16
	17 0000 6209	LKS-M 21-1	420	50	60	21
	17 0000 6210	LKS-M 21-2	420	50	80	21
	17 0000 6211	LKS-M 21-3	420	50	100	21
	17 0000 6220	LKS-M 21-4	420	60	120	21
	17 0000 6247	LKS-M 25,5-1	420	60	80	25,5
	17 0000 6255	LKS-M 25,5-2	420	60	120	25,5
Stries 3,0mm x 60° / Serration 3,0mm x 60°						
Autoblok-SMW; Autogrip; Bison; Howa; Kitagawa; MMK-Matsumoto; Röhm; Samchully; Schunk; Seoam; Strong; Tonfou	17 0000 6243	LKS-M 25-1	420	60	80	25
	17 0000 6245	LKS-M 25-2	420	60	120	25

AUTOBLOK-SMW

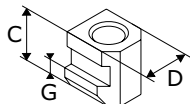
GBMO
Tél : 0148609146
Fax: 0149633577
gbmo@gbmo.fr

Lardons de fixation T-Nuts for chucks with inch serration

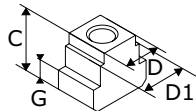
Stries 1/16 x 90°
Serration 1/16 x 90°



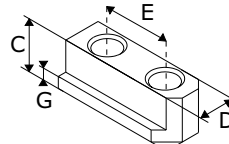
Version 1



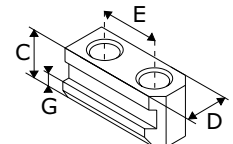
Version 2



Version 3



Version 4



Version 5

Type du mandrin Chuck type	Indeks Id.-No.	Type	C	D	D1	E	Ecrous Screws	G	DIAMETRE DU MANDRIN	Version
AN-D 165; BB-D 175; HFK 160	17 0000 6230	WTD 14-1	18,5	14	-	20	M10x25	6,5	160 MM	5
AL-D 210; BB-D 210; BH-D 210	17 0000 6240	WTD 17-1	20,5	17	-	22	M12x25	7,5	210 MM	5
BB-D250; BH-D250; HB-D250	17 0000 6250	WTD 21-1	26,5	21	-	28	M16x35	10	254 MM	5
BB-D315; HB-D315; NT-D315	17 0000 6250	WTD 21-1	26,5	21		28	M16x35	10	300 MM	5
AN-D 400; BB-N 400; BH-D 400; BH-D 450; BH-FC 400; HYD-S 400	17 0000 2400	WTS 25,5-9	34,5	25,5	-		M20x45	15	400 MM	1
BHD-D 500; BB-N 500; BB-N ES 500	17 0001 2400	WTS 25,5-9	34,5	25,5			M20x45	15	500 MM	1
BB 630; BH-D 630; BB-N ES 600	17 0000 2400	WTS 25,5-9	34,5	25,5			M20x45	15	600 MM	1